



Toon Boom Storyboard Pro 7 Keyboard Shortcuts Guide

TOON BOOM ANIMATION INC.
4200 Saint-Laurent, Suite 1020
Montreal, Quebec, Canada
H2W 2R2

+1 514 278 8666
contact@toonboom.com
toonboom.com

Legal Notices

Toon Boom Animation Inc.
4200 Saint-Laurent, Suite 1020
Montreal, Quebec, Canada
H2W 2R2

Tel: +1 514 278 8666

Fax: +1 514 278 2666

toonboom.com

Disclaimer

The content of this document is the property of Toon Boom Animation Inc. and is copyrighted. Any reproduction in whole or in part is strictly prohibited.

The content of this document is covered by a specific limited warranty and exclusions and limit of liability under the applicable License Agreement as supplemented by the special terms and conditions for Adobe®Flash® File Format (SWF). For details, refer to the License Agreement and to those special terms and conditions.

Trademarks

Toon Boom® is a registered trademark. Storyboard Pro™ and the Toon Boom logo are trademarks of Toon Boom Animation Inc. All other trademarks of the property of their respective owners.

Publication Date

11-18-2020

Copyright © 2020 Toon Boom Animation Inc., a Corus Entertainment Inc. company. All rights reserved.

Table of Contents

Table of Contents	2
About Keyboard Shortcuts	3
Accessing the Keyboard Shortcuts Dialog	4
About Keyboard Shortcut Sets	6
Switching Between Shortcut Sets	7
Creating a Keyboard Shortcut Set	8
Deleting a Keyboard Shortcut Set	9
Exporting Keyboard Shortcuts	10
Importing Keyboard Shortcuts	11
Searching for Keyboard Shortcuts	12
Customizing Keyboard Shortcuts	14
Resetting Keyboard Shortcuts	16
Default Keyboard Shortcuts List	18

About Keyboard Shortcuts

Storyboard Pro uses keyboard shortcuts to allow you to quickly use commands you are familiar with without having to browse through menus and toolbars. Learning the keyboard shortcuts for the commands you use the most often can be a great way to increase your productivity with Storyboard Pro.

Using the Keyboard Shortcuts dialog, you can:

- Check which keyboard shortcuts are assigned to which commands
- Search through commands and keyboard shortcuts
- Customize existing keyboard shortcuts
- Assign keyboard shortcuts to commands that don't have any
- Save keyboard shortcuts as presets
- Switch between keyboard shortcut presets
- Export and import keyboard shortcut configurations

Accessing the Keyboard Shortcuts Dialog

You can access the Keyboard Shortcuts dialog from the **Edit** menu on Windows or from the **Storyboard Pro 7** menu on macOS. The Keyboard Shortcuts menu item is just below the Preferences menu item.

How to open the Keyboard Shortcuts dialog box

1. Do one of the following:
 - **Windows:** In the top menu, select **Edit > Keyboard Shortcuts**.
 - **macOS:** In the top menu, select **Storyboard Pro 7 > Keyboard Shortcuts**.

About Keyboard Shortcut Sets

Storyboard Pro comes preloaded with different sets of keyboard shortcut configurations:

- **Toon Boom Harmony:** A set of keyboard shortcuts designed to liken the default keyboard shortcuts for Toon Boom Harmony.
- **Toon Boom Storyboard:** The default keyboard shortcuts for Storyboard Pro. When the Storyboard Pro documentation refers to a specific keyboard shortcut, it refers to the keyboard shortcuts in this preset.

You can quickly switch between keyboard shortcut sets in the Keyboard Shortcuts dialog. You can also create your own keyboard shortcut sets. Keyboard shortcut sets can be saved directly to your preferences, along with the shortcut presets that are preloaded in Storyboard Pro. They can also be exported as XML files and imported later or shared with other users.

Switching Between Shortcut Sets

You can instantly switch from one keyboard shortcut set to another in the Keyboard Shortcuts dialog.

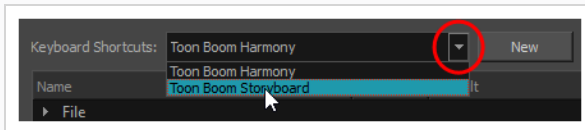


NOTE

Switching to a different keyboard shortcut set will not discard your current keyboard shortcut configuration. Your keyboard shortcut configuration is saved to the currently selected keyboard shortcut set. Hence, you can return to your old configuration simply by switching back to the previously used keyboard shortcut set.

How to switch between keyboard shortcut sets

1. Do one of the following to open the Keyboard Shortcuts dialog:
 - **Windows:** In the top menu, select **Edit > Keyboard Shortcuts**.
 - **macOS:** In the top menu, select **Storyboard Pro 7 > Keyboard Shortcuts**.
2. In the top-left corner of the Keyboard Shortcuts dialog, open the **Keyboard Shortcuts:** drop-down and select the preset you want to use.



3. Click on **OK**.

Creating a Keyboard Shortcut Set

You can create your own keyboard short cut sets and add them to the **Keyboard Shortcuts:** drop-down menu of the Keyboard Shortcuts dialog.

How to create a keyboard shortcut set

1. Do one of the following to open the Keyboard Shortcuts dialog:
 - **Windows:** In the top menu, select **Edit > Keyboard Shortcuts**.
 - **macOS:** In the top menu, select **Storyboard Pro 7 > Keyboard Shortcuts**.
2. In the list of commands and keyboard shortcuts, configure each keyboard shortcut the way you want them in your preset.
3. Near the top of the Keyboard Shortcuts dialog, click on the **New** button.
4. In the Keyboard Shortcut Set dialog, type in a name for your keyboard shortcut preset.
5. Click **OK**.

The keyboard shortcut set is now in the **Keyboard Shortcuts:** drop-down. Selecting it will load the keyboard shortcuts configuration you had when you created it.

Deleting a Keyboard Shortcut Set

You can delete a custom keyboard shortcut set from the **Keyboard Shortcuts:** drop-down in the Keyboard Shortcuts dialog.



NOTE

You can only delete custom keyboard shortcut sets that you created or imported. You cannot delete the keyboard shortcut sets that are preloaded with Storyboard Pro.

How to delete a keyboard shortcut set

1. Do one of the following to open the Keyboard Shortcuts dialog:
 - **Windows:** In the top menu, select **Edit > Keyboard Shortcuts**.
 - **macOS:** In the top menu, select **Storyboard Pro 7 > Keyboard Shortcuts**.
2. In the **Keyboard Shortcuts:** drop-down, select the keyboard shortcut set that you want to delete.
3. At the right of the **Keyboard Shortcuts:** drop-down, click on the **Delete** button.

A confirmation prompt appears.
4. If you are sure you want to delete the selected keyboard shortcut set, click on **Yes**.

The selected keyboard shortcut set is removed from the **Keyboard Shortcuts:** drop-down.

Exporting Keyboard Shortcuts

You can export your current keyboard shortcut configuration into an XML file. You can reimport this file later to restore your configuration, or share it with project collaborators so that you all use the same keyboard shortcuts.



NOTE

When you export your keyboard shortcuts configuration, only the currently selected keyboard shortcuts set is exported.

How to export your keyboard shortcut configuration

1. Do one of the following to open the Keyboard Shortcuts dialog:
 - **Windows:** In the top menu, select **Edit > Keyboard Shortcuts**.
 - **macOS:** In the top menu, select **Storyboard Pro 7 > Keyboard Shortcuts**.
2. In the **Keyboard Shortcuts:** drop-down, make sure the keyboard shortcut set you want to export is selected.
3. At the right of the **Keyboard Shortcuts:** drop-down, click on the **Save...** button.
A save dialog appears.
4. Browse to the location where you want to save your keyboard shortcut file.
5. Type in the desired name for your keyboard shortcut file.
6. Click on **Save**.

The currently keyboard shortcut set has been exported as an XML file, in the selected location with the file name you gave it.

Importing Keyboard Shortcuts

You can import a keyboard shortcut configuration file exported from Storyboard Pro.



NOTES

- To export keyboard shortcuts into a file, see [Exporting Keyboard Shortcuts](#) on page 10.
- When you import a keyboard shortcuts file, it is added to the list of keyboard shortcut sets in the Keyboard Shortcuts drop-down menu of the Keyboard Shortcuts dialog.

How to import a keyboard shortcut configuration file

1. Do one of the following to open the Keyboard Shortcuts dialog:
 - **Windows:** In the top menu, select **Edit > Keyboard Shortcuts**.
 - **macOS:** In the top menu, select **Storyboard Pro 7 > Keyboard Shortcuts**.
2. At the right of the **Keyboard Shortcuts:** drop-down, click on the **Load...** button.
An open dialog appears.
3. Browse to the directory where your keyboard shortcut file is located.
4. Select the keyboard shortcut file you want to import.
5. Click on **Open**.

The configuration selected keyboard shortcut file is loaded into the Keyboard Shortcuts dialog, and is added as a keyboard shortcut set in the **Keyboard Shortcuts:** drop-down menu.

Searching for Keyboard Shortcuts

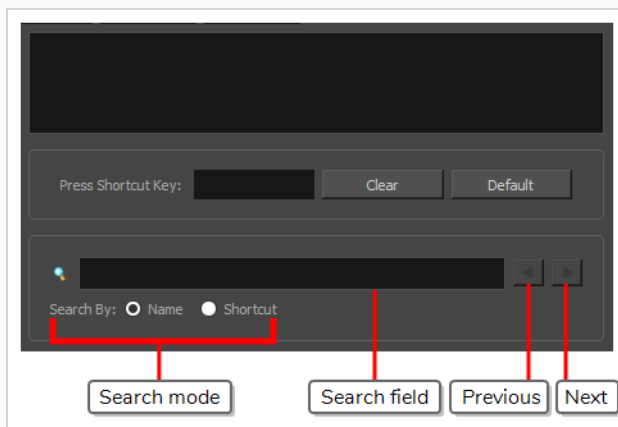
Storyboard Pro has a very extensive list of commands that can be assigned to keyboard shortcuts. Using the Search bar in the Keyboard Shortcuts dialog, you can:


- Search for a command, and its keyboard shortcut, by typing part or all of its name.
- Search for a command by typing part or all of its currently assigned keyboard shortcut.

How to search for a keyboard shortcut


1. Do one of the following to open the Keyboard Shortcuts dialog:

- **Windows:** In the top menu, select **Edit > Keyboard Shortcuts**.
- **macOS:** In the top menu, select **Storyboard Pro 7 > Keyboard Shortcuts**.



1. Below the  Search field, select the type of search you want to perform:

- **Name:** To search a command by typing part or all of its name.
- **Shortcut:** To search a command by typing part or all of its currently assigned keyboard shortcut.

2. In the  Search field, type in either part of the name of the command you want to find, or part of its currently assigned keyboard shortcut, depending on which option you chose in the previous step.



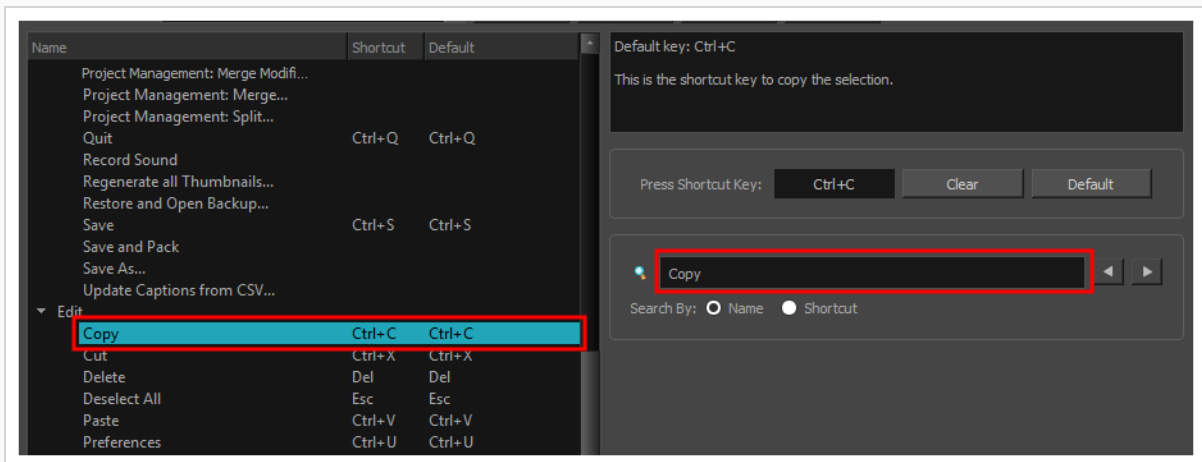
NOTES

- When searching for a command by its keyboard shortcut, if the keyboard shortcut is a combination, make sure that:
 - Modifier keys (Ctrl, Alt and Shift) are typed before other keys.
 - Join the keys by a + sign, with no space around it.

For example, to search for the **Copy** command, type **Ctrl+C**.

- On macOS, modifier keys such as Command (⌘), Control (⌘), Alt (⌘) and Shift (⇧) are represented by specific symbols that cannot be typed with a standard keyboard. You can copy and paste them from this document into the search field if you are reading this on a computer.

Storyboard Pro will immediately select the first command in the list that matches your search query.



3. If your query matches several commands in the list, uses the ◀ Previous and ▶ Next button right of the 🔍 Search field to navigate between matching commands.

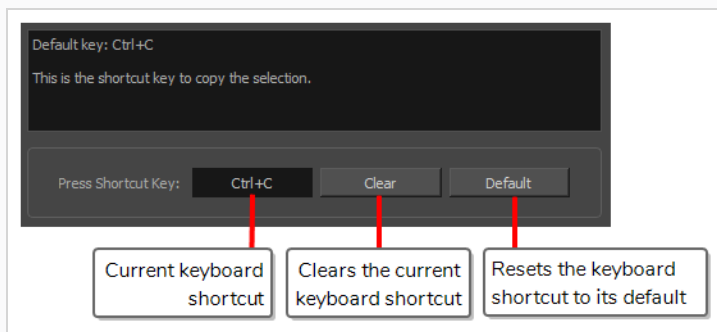
Customizing Keyboard Shortcuts

You can create your own keyboard shortcut for a tool or command, by assigning it to a certain key or combination of keys.

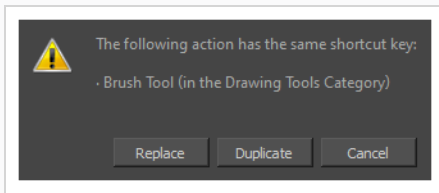
How to customize a keyboard shortcut

1. Do one of the following to open the Keyboard Shortcuts dialog:
 - **Windows:** In the top menu, select **Edit > Keyboard Shortcuts**.
 - **macOS:** In the top menu, select **Storyboard Pro 7 > Keyboard Shortcuts**.
2. In the list of commands and shortcuts to the left, locate and select the command for which you want to assign a keyboard shortcut—see [Searching for Keyboard Shortcuts](#).

The description of the selected command, as well as its currently assigned shortcut, appear in the right pane.



3. Do one of the following:
 - If you want to assign a custom shortcut to the selected command, click inside the box just right of **Press Shortcut Key:**.
 - If you want the selected command to have no keyboard shortcut, click on **Clear**.
 - If you want the selected command to be assigned to its default keyboard shortcut, click on **Default**.
4. If you are assigning a custom keyboard shortcut to the selected command, using your keyboard, type in the keyboard shortcut you want to use in the **Press Shortcut Key:** field.
5. If the keyboard shortcut you typed in is already in use by another command, a dialog box will prompt you to decide what to do.



If this occurs, choose one the following options depending on what suits your case better:

- **Replace:** This will unassign the keyboard shortcut from the commands listed in the dialog box, and assign it to the selected command.
- **Duplicate:** Assigns the keyboard shortcut to the selected command, and lets other commands use the same keyboard shortcut.



IMPORTANT

Having several commands share the same keyboard shortcut could cause undesired behaviour.

- **Cancel:** Allows you to attempt assigning a different keyboard shortcut to the selcted command.

Resetting Keyboard Shortcuts

You can reset the configuration of your keyboard shortcuts to the default values for the selected keyboard shortcut set.



IMPORTANT

This will replace your current keyboard shortcut configuration and discard any custom keyboard shortcut you created.

How to reset your keyboard shortcuts configuration

1. Do one of the following to open the Keyboard Shortcuts dialog:
 - **Windows:** In the top menu, select **Edit > Keyboard Shortcuts**.
 - **macOS:** In the top menu, select **Storyboard Pro 7 > Keyboard Shortcuts**.
2. In the **Keyboard Shortcuts:** drop-down, make sure the keyboard shortcut set that you want to restore to its default configuration is selected.
3. In the bottom-left corner of the Keyboard Shortcuts dialog, click on **Restore All Defaults**.
A confirmation prompt appears.
4. If you are sure you want to restore the default keyboard shortcut configuration for the selected keyboard shortcut set, click on **Yes**.

All the commands in the list are now set to their default keyboard shortcut.

Default Keyboard Shortcuts List

This document lists the default keyboard shortcuts for Storyboard Pro.



NOTES

- Some shortcuts require the use of more than one key. To use them, you must press and hold the first keys, then while holding those keys pressed, hit the last key. For example, the shortcut for the Brush tool is Alt + B. To use this shortcut, press and hold Alt, then hit B.
- Some shortcuts are different on Windows and on macOS. This list displays the Windows in the Windows column and the macOS shortcut in the macOS column.
- Commands that have no default shortcut are left blank in this list.
- If you want to make note of your custom shortcuts, you can print this document and write them down in the Custom column.

Keyboard Shortcut Categories

- [File on page 19](#)
- [Edit on page 22](#)
- [View on page 23](#)
- [Layer on page 26](#)
- [Clips and Tracks on page 29](#)
- [Caption on page 31](#)
- [Colour on page 32](#)
- [Help on page 32](#)
- [Drawing Tools on page 32](#)
- [Library on page 35](#)
- [Play/Navigation on page 36](#)
- [Storyboard on page 38](#)
- [Camera on page 41](#)
- [Tool Presets on page 41](#)
- [3D Graph on page 42](#)
- [Default Keyboard Shortcuts List on page 18](#)

File

Command	Shortcut (Windows)	Shortcut (macOS)	Custom Shortcut
Backup Storyboard			
Close	Ctrl + W	⌘ + W	
Conformation: Export Project			
Conformation: Export Selected Panels			
Conformation: Export Tracked Panels			
Conformation: Import Animatic Project			
Create Optimized Drawings			
Export: Bitmap			
Export: CSV			
Export: Current Image			
Export: EDL/AAF/XML			
Export: Layout			
Export: Movie			

Command	Shortcut (Windows)	Shortcut (macOS)	Custom Shortcut
Export: PDF			
Export: Audio			
Export: To Harmony			
Import Images as Layers			
Import Images as Scenes			
Import Sound Clips			
Import Videos/Images As Clips			
New from Final Draft Script			
New from Harmony Scenes			
New	Ctrl + N	⌘ + N	
Open	Ctrl+O	⌘+O	
Optimize Project			
Project Management: Extract			
Project Management:			

Command	Shortcut (Windows)	Shortcut (macOS)	Custom Shortcut
Insert			
Project Management: Merge and Replace			
Project Management: Merge			
Project Management: Split			
Quit	Ctrl + Q	⌘ + Q	
Record Sound			
Regenerate All Thumbnails			
Restore and Open Backup			
Save	Ctrl + S	⌘ + S	
Save and Pack			
Save As			
Update Caption from CSV			

Edit

Command	Shortcut (Windows)	Shortcut (macOS)	Custom Shortcut
Copy	Ctrl + C	⌘ + C	
Cut	Ctrl + X	⌘ + X	
Delete	Delete	⌫	
Deselect All	Esc	Esc	
Paste	Ctrl + V	Ctrl + V	
Preferences	Ctrl + U	⌘ + ,	
Redo	Ctrl + Shift + Z	⌘ + Shift + Z	
Ripple Delete	Shift + Del	⇧ + ⌫	
Select All	Ctrl + A	⌘ + A	
Select All Drawings In Scene	Ctrl + Shift + A	⌘ + Shift + A	
Select All Panels in Current Act			
Select All Panels in Current Scene			
Select All Panels in Current Sequence			
Undo	Ctrl + Z	⌘ + Z	

View

Command	Shortcut (Windows)	Shortcut (macOS)	Custom Shortcut
12 Field Grid			
16 Field Grid			
3D Flying Navigation Tool			
3D View Layout			
Drawing Layout			
Exit Pitch Mode			
Free Pan and Zoom	Spacebar	Spacebar	
Hand Tool			
Horizontal Layout			
Light Table			
Look at Selected			
Move Backward			
Move Forward			
Onion Skin: 1 Next			
Onion Skin: 1 Previous			
Onion Skin: 2 Next			
Onion Skin: 2 Previous			

Command	Shortcut (Windows)	Shortcut (macOS)	Custom Shortcut
Onion Skin: 3 Next			
Onion Skin: 3 Previous			
Onion Skin: No Next			
Onion Skin: No Previous			
Onion Skin: Selected Layers Only			
Overview Layout			
PDF View Layout			
Pitch Mode Layout			
Point of View at Panel Level			
Point of View at Project Level			
Point of View at Scene Level			
Realistic Preview			
Recentre			
Reset Pan	Shift + N	Shift + N	
Reset Rotation	Shift + X	Shift + X	
Reset Stage View to Camera Overview			

Command	Shortcut (Windows)	Shortcut (macOS)	Custom Shortcut
Reset Stage View to Current Panel Overview			
Reset Stage View top Default Drawing Area			
Reset Stage View to End Camera			
Reset Stage View to Start Camera			
Reset View	Shift + M	Shift + M	
Reset Zoom	Shift + Z	Shift + Z	
Rotate View CCW	C	C	
Rotate View CW	V	V	
Show 4:3 Area			
Show 4:3 Safety			
Show Complete Camera Path			
Show Grid	Ctrl + G	⌘ + G	
Show Grid Outline Only			
Show Layer Path			
Show Safe Area			
Show Safe Area Mask			

Command	Shortcut (Windows)	Shortcut (macOS)	Custom Shortcut
Show Strokes			
Show Timecode			
Show/Hide Onion Skin	Alt+O	⌘+Alt+O	
Timeline Layout			
Toggle Full Screen	Ctrl + Alt + Shift + F	⌘ + Alt + Shift + F	
Toggle Snapping In Timeline			
Vertical Layout			
Zoom In	2	2	
Zoom Out	1	1	
Zoom Tool	Alt + Z	Alt + Z	

Layer

Command	Shortcut (Windows)	Shortcut (macOS)	Custom Shortcut
Align Layer to Camera			
Blur Bitmap Layer			
Bring Layer Forward			
Bring Layer to Front			
Center Pivot on Selection			

Command	Shortcut (Windows)	Shortcut (macOS)	Custom Shortcut
Change Bitmap Layer Resolution			
Change Layer Opacity			
Change Vector Layer Brush Resolution			
Convert to Bitmap Layer			
Convert to Drawing			
Convert to Vector Layer			
Copy End Layer Position to Start			
Copy Layers			
Copy Start Layer Position to End			
Delete Layer			
Duplicate Layers			
Generate Auto-Matte			
Lock Layer	Alt + L	Alt + L	
Merge Down	Ctrl + E	⌘ + E	
Merge Layers			
Merge Selected Layers			

Command	Shortcut (Windows)	Shortcut (macOS)	Custom Shortcut
New Bitmap Layer			
New Group Layer			
New Vector Layer			
Paste Layers			
Rename Layer			
Reset Pivot			
Reset Selected 3D Nodes			
Reset Transform	Ctrl + R	⌘ + R	
Select Next (up) Layer in Current Panel			
Select Previous (down) Layer in Current Panel			
Send Layer Backward			
Send Layer to Back			
Set Layer Layout As Default			
Share Drawing			
Show/Hide Layer			
Snap to Ground			

Command	Shortcut (Windows)	Shortcut (macOS)	Custom Shortcut
Spread Layer Motion			
Toggle Background Layer			
Ungroup Selected Group			
Unlink from Shared Drawing			
Update Model Position			

Clips and Tracks

Command	Shortcut (Windows)	Shortcut (macOS)	Custom Shortcut
Audio Scrubbing			
Change Frame When Clicking a Track			
Delete Current Track			
Enable/Disable Current Track			
Find Sound Clips			
Lock/Unlock all Audio Tracks			
Lock/Unlock all Video Tracks			
Lock/Unlock Current Track			

Command	Shortcut (Windows)	Shortcut (macOS)	Custom Shortcut
Move Track Down			
Move Track Up			
New Audio Track			
New Video Track			
New Audio Track			
New Video Track			
Overwrite Clips			
Rename Current Track			
Set Sound Clip Colour to Blue			
Set Sound Clip Colour to Custom			
Set Sound Clip Colour to Default			
Set Sound Clip Colour to Green			
Set Sound Clip Colour to Orange			
Set Sound Clip Colour to Purple			
Set Sound Clip Colour to Red			

Command	Shortcut (Windows)	Shortcut (macOS)	Custom Shortcut
Set Sound Clip Colour to Yellow			
Show Sound Clip Names			
Show Volume			
Show Waveform			
Split Clip at Current Frame			
Toggle Current Track Solo mode			

Caption

Command	Shortcut (Windows)	Shortcut (macOS)	Custom Shortcut
Add Caption to Panels			
Add Caption to Storyboard			
Add Sketch to Current Panel			
Default Caption Format			
Find Text in Captions	Ctrl + Shift + F	⌘ + Shift + F	
Format Captions			
Save Captions Layout as Default			
Show/Hide Captions			

Colour

Command	Shortcut (Windows)	Shortcut (macOS)	Custom Shortcut
Edit Colour			
New Colour Swatch			
New Texture			
Show Colour View			

Help

Command	Shortcut (Windows)	Shortcut (macOS)	Custom Shortcut
About			
Online Help	F1	F1	
Open Welcome Screen			
Storyboard on the Web			

Drawing Tools

Command	Shortcut (Windows)	Shortcut (macOS)	Custom Shortcut
Bring Forward			
Bring to Front			
Brush Tool	Alt + B	Alt + B	
Camera Tool			
Centerline Editor Tool			

Command	Shortcut (Windows)	Shortcut (macOS)	Custom Shortcut
Close Gap Tool			
Contour Editor Tool			
Convert Brush Strokes to Pencil Lines			
Convert Pencil Lines to Brush Strokes			
Convert Strokes to Pencil Lines			
Create Layer on Surface Tool			
Cutter Tool	Alt + T	Alt + T	
Decrease Brush Size	[[
Draw Behind			
Dropper Tool	Alt + D	Alt + D	
Ellipse Tool			
Eraser Tool	Alt + E	Ctrl + E	
Flatten	Alt + Shift + F	Alt + Shift + F	
Flatten and Remove Extra Strokes			
Flip Horizontal	Alt + H	Alt + H	
Flip Vertical	Alt + V	Alt + V	

Command	Shortcut (Windows)	Shortcut (macOS)	Custom Shortcut
Group			
Increase Brush Size]]	
Join Pencil Lines			
Line Tool			
Maintain Size Tool			
Paint Tool	Alt+I	Alt+I	
Paint Unpainted Tool	Alt+Y	Alt+Y	
Pencil Tool	Alt + 9	Alt + 9	
Perspective Tool			
Polyline Tool			
Rectangle Tool			
Reframe Tool			
Remove Art Inside Selection			
Remove Art Outside Selection	Shift + Del	Shift + Del	
Remove Art Outside Selection (Backspace)	Shift + Backspace	Shift + Backspace	
Resize Pencil Style Tool	O	O	
Rotate 180			

Command	Shortcut (Windows)	Shortcut (macOS)	Custom Shortcut
Rotate 90 CCW			
Rotate 90 CW			
Selected By Colour Tool			
Select Strokes With Current Colour			
Select Tool	Alt + S	Alt + S	
Send Backward			
Send to Back			
Snap and Align			
Snap to Contour	Ctrl + Alt + ;	Alt + ⌘ + ;	
Split Pencil Line			
Stamp Tool			
Text Tool	Ctrl + Shift + T	⌘ + Shift + T	
Ungroup			
Unpaint Tool			

Library

Command	Shortcut (Windows)	Shortcut (macOS)	Custom Shortcut
Close Library			

Command	Shortcut (Windows)	Shortcut (macOS)	Custom Shortcut
Delete Folder			
Delete Thumbnails			
Details			
Generate Thumbnails			
Import Files			
List			
New Folder			
Open Library			
Refresh			
Rename			
Thumbnails			

Play/Navigation

Command	Shortcut (Windows)	Shortcut (macOS)	Custom Shortcut
Go to Specified Frame			
Go to Specified Scene	Ctrl + F	⌘ + F	
Include Audio in Playback Range			
Next Frame	.	.	

Command	Shortcut (Windows)	Shortcut (macOS)	Custom Shortcut
Next Panel	F	F	
Next Panel Caption			
Next Scene			
Next Sequence			
Panel First Frame	Home	Home	
Panel Last Frame	End	End	
Play			
Play Selection	Shift + Enter	Shift + Enter	
Previous Frame	,	,	
Previous Panel	A	A	
Previous Panel Caption			
Previous Scene			
Previous Sequence			
Toggle Audio Playback			
Toggle Camera Mask			
Toggle Camera Preview			
Toggle Loop Playback			

Storyboard

Command	Shortcut (Windows)	Shortcut (macOS)	Custom Shortcut
Add Frame to Panel	+	+	
Add Marker			
Add Snapshot			
Add Transition			
Change Panel Duration			
Delete All Markers			
Delete Selected Marker			
Delete Transition			
Duplicate Selected Panels			
Edit Marker			
Flip Selected Scene			
Go to Next Marker			
Go to Previous Marker			
Join Selected Acts			
Join Selected Sequences			
Lock Scenes and Panels Names			

Command	Shortcut (Windows)	Shortcut (macOS)	Custom Shortcut
Lock Scene Duration			
Move Panel In to Current Frame			
Move Panel Out to Current Frame			
New Panel	P	P	
New Panel Before			
New Scene			
New Scene Before			
New Scene from Selected Panels			
New Sequence			
New Sequence from Selection			
Properties	Alt + Return	Alt + Return	
Record Voice Annotation			
Remove All Sequences from Project			
Remove Frame from Panel	-	-	
Rename Panel			

Command	Shortcut (Windows)	Shortcut (macOS)	Custom Shortcut
Rename Scene			
Rename Sequence			
Set Panel Colour to Blue			
Set Panel Colour to Custom			
Set Panel Colour to Default			
Set Panel Colour to Green			
Set Panel Colour to Orange			
Set Panel Colour to Purple			
Set Panel Colour to Red			
Set Panel Colour to Yellow			
Smart Add Panel			
Split Current Scene			
Split Current Sequence			
Split Panel at Current Frame			
Start New Act			

Command	Shortcut (Windows)	Shortcut (macOS)	Custom Shortcut
Toggle Animatic Editing Mode			
Unlock Scenes and Panel Names			

Camera

Command	Shortcut (Windows)	Shortcut (macOS)	Custom Shortcut
Align Camera Keyframe with Stage View Position			
Copy Camera from Selected Panels			
Go to Selected Camera Keyframe			
Paste and Fit Camera on Selected Panels			
Remove Selected Camera Keyframes			
Reset Camera			
Reset Selected Camera Keyframes			

Tool Presets

Command	Shortcut (Windows)	Shortcut (macOS)	Custom Shortcut
Tool Preset Shortcut 0			

Command	Shortcut (Windows)	Shortcut (macOS)	Custom Shortcut
Tool Preset Shortcut 1			
Tool Preset Shortcut 2			
Tool Preset Shortcut 3			
Tool Preset Shortcut 4			
Tool Preset Shortcut 5			
Tool Preset Shortcut 6			
Tool Preset Shortcut 7			
Tool Preset Shortcut 8			
Tool Preset Shortcut 9			

3D Graph

Command	Shortcut (Windows)	Shortcut (macOS)	Custom Shortcut
Collapse All Elements			
Collapse Selection			
Disable Sub-Object			
Enable Sub-Object			
Expand All Elements			
Expand Selection			
Hide Sub-Object Shape			

Command	Shortcut (Windows)	Shortcut (macOS)	Custom Shortcut
Select Child Sub-Object			
Select Next Sibling Sub-Object			
Select Parent Sub-Object			
Select Previous Sibling Sub-Object			
Separate Sub-Objects			
Separate Sub-Tree			
Show Sub-Object Shape			

Guides

Command	Shortcut (Windows)	Shortcut (macOS)	Custom Shortcut
Align with Guide	Shift + A	Shift + A	
Enable Guide	G	G	
Enable Guide with Eraser			
Full Cursor Display			
Lock Guide	Shift + L	Shift + L	
Show Reference Lines	Shift + G	Shift + G	