



## Keyboard Shortcuts

# Legal Notices

## Published by Toon Boom Animation Inc.

Corporate Headquarters  
7 Laurier Avenue East  
Montreal, Quebec  
Canada H2T 1E4  
Tel: (514) 278-8666  
Fax: (514) 278-2666  
www.toonboom.com

## Disclaimer

The content of this manual is covered by a specific limited warranty and exclusions and limit of liability under the applicable License Agreement as supplemented by the special terms and conditions for Adobe® Flash® File Format (SWF). Please refer to the License Agreement and to those special terms and conditions for details.

The content of this manual is the property of Toon Boom Animation Inc. and is copyrighted. Any reproduction in whole or in part is strictly prohibited. For additional copies of this manual, please contact Toon Boom Animation Inc. at the Corporate Headquarters address.  
Copyright © 2008 by Toon Boom Animation Inc. All rights reserved.

## Trademarks

Toon Boom Pencil Check Pro is a trademark owned by Toon Boom Animation Inc. All other trademarks are the property of their respective owners.

## Credits

Documentation Development: Peter Cawthorne  
Content Development and Art: Tania Gray, Marie Eve Chartrand, Anouk Whissell

## Publication Date

April 2008

# Contents

|                          |   |
|--------------------------|---|
| Keyboard Shortcuts ..... | 2 |
| Global Commands .....    | 3 |
| Drawing .....            | 5 |
| Model View .....         | 7 |
| XSheet View .....        | 7 |

# Keyboard Shortcuts

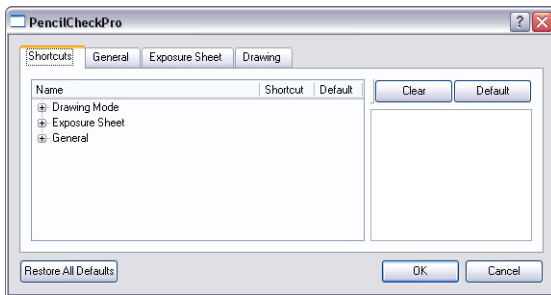
This document lists Toon Boom Pencil Check Pro's default keyboard shortcuts.

In this listing, each key in a sequence is inside square brackets as in, [Ctrl]+[A]. The brackets separate the key from the "+" sign, neither are part of the sequence.

To use a shortcut, press the key and the character simultaneously.

## To modify a shortcut:

1. Select **Edit > Preferences** (Windows) or **Pencil Check Pro > Preferences** (Mac OS X) to open the Preferences dialog box.



2. Go to the Shortcuts tab.
3. Select the type of command from the Category drop-down list.
4. Select the specific command from the Commands list.
  - ▶ To create a custom shortcut, click the shortcut, and type a new shortcut path.
  - ▶ To restore a shortcut to its original keyboard combination, press the **Default Value** button.
  - ▶ To remove the current shortcut, press the **Clear** button.
5. Click OK to save your changes.

If you want to restore all shortcuts to their original keyboard combinations, click the **Restore All Defaults** button and click OK.

**Note:** The following abbreviations are used throughout this document:

- MMB: Middle-Mouse Button
- LMB: Left-Mouse Button
- RMB: Right-Mouse Button

## Global Commands

| Command                  | Windows            | Mac OS X              |
|--------------------------|--------------------|-----------------------|
| <b>Edit</b>              |                    |                       |
| Copy                     | [Ctrl]+[C]         | [Command]+[C]         |
| Cut                      | [Ctrl]+[X]         | [Command]+[X]         |
| Delete                   | [Delete]           | [Delete]              |
| Deselect All             | [Esc]              | [Esc]                 |
| Paste                    | [Ctrl]+[V]         | [Command]+[V]         |
| Redo                     | [Ctrl]+[Shift]+[Z] | [Command]+[Shift]+[Z] |
| Select All               | [Ctrl]+[A]         | [Command]+[A]         |
| Undo                     | [Ctrl]+[Z]         | [Command]+[Z]         |
| Consecutive Selections   | [Shift] + click    | [Shift] + click       |
| Multiple Selections      | [Ctrl] + click     | [Command] + click     |
| <b>File</b>              |                    |                       |
| Capture                  | [S]                | [S]                   |
| New                      | [Ctrl]+[N]         | [Command]+[N]         |
| Open                     | [Ctrl]+[O]         | [Command]+[O]         |
| Export Images            | [Ctrl]+[Shift]+[Y] | [Command]+[Shift]+[Y] |
| Save                     | [Ctrl]+[S]         | [Command]+[S]         |
| <b>Help</b>              |                    |                       |
| Help                     | [F1]               | [F1]                  |
| <b>Playback Controls</b> |                    |                       |
| First Frame              | [Shift]+[,] comma  | [Shift]+[,] comma     |
| Last Frame               | [Shift]+[.] period | [Shift]+[.] period    |
| Next Column              | [J]                | [J]                   |
| Next Drawing             | [G]                | [G]                   |
| Next Frame               | [.] period         | [.] period            |
| Previous Column          | [H]                | [H]                   |
| Previous Drawing         | [F]                | [F]                   |
| Previous Frame           | [,] comma          | [,] comma             |
| Playback Scene           | [Shift]+[Enter]    | [Shift]+[Enter]       |
| Stop Playback            | [Shift]+[Enter]    | [Shift]+[Enter]       |
| <b>View</b>              |                    |                       |
| Grabber                  | [Spacebar]         | [Spacebar]            |

## Global Commands

| Command            | Windows                               | Mac OS X      |
|--------------------|---------------------------------------|---------------|
| Recenter on Mouse  | [N]                                   | [N]           |
| Reset Angle        | [Shift]+[X]                           | [Shift]+[X]   |
| Reset Pan          | [Shift]+[N]                           | [Shift]+[N]   |
| Reset View         | [Shift]+[M]                           | [Shift]+[M]   |
| Reset Zoom         | [Shift]+[Z]                           | [Shift]+[Z]   |
| Zoom In            | [2]<br>[Spacebar]+[MMB]+<br>drag down | [2]           |
| Zoom Out           | [1]<br>[Spacebar]+[MMB]+<br>drag up   | [1]           |
| <b>Workspace</b>   |                                       |               |
| Toggle Full Screen | [Ctrl] + [F]                          | [Command]+[F] |

## Drawing

| Command   | Windows            | Mac OS X           |
|---|--------------------|--------------------|
| <b>Clean Up</b>   |                    |                    |
| Close Gaps  | [Shift]+[F10]      |                    |
| Remove Dirt   | [Shift]+[D]        | [Shift]+[D]        |
| <b>Options</b>  |                    |                    |
| Apply Tool to All Visible Layers  | [Alt]+[A]          | [Alt]+[A]          |
| Auto Create Colour Art from Brush   | [Shift]+[F2]       | [Shift]+[F2]       |
| <b>Selected</b>   |                    |                    |
| Create Colour Art from Line Art   | [*]                | [*]                |
| Flip Horizontal   | [4]                | [4]                |
| Flip Vertical   | [5]                | [5]                |
| Nudge Large Steps   | Arrows + [Shift]   | Arrows + [Shift]   |
| Nudge Small Steps   | Arrows             | Arrows             |
| <b>Selection Tools</b>  |                    |                    |
| Select  | [Alt]+[S]          | [Alt]+[S]          |
| Toggle marquee and lasso selection tool (Contour Editor, Perspective Tool and Select Tool only) | [Alt]              | [Alt]              |
| Select: Copy  | [Ctrl] + drag      | [Command] + drag   |
| Select: Delete all outside selection  | [Shift]+[Del]      | [Shift]+[Del]      |
| Select: Add to selection  | [Shift]            | [Shift]            |
| Switch to Select Tool (all Drawing Tools)   | [Ctrl]             | [Alt]              |
| <b>Drawing Tools</b>  |                    |                    |
| Brush   | [Alt]+[B]          | [Alt]+[B]          |
| Brush: Change Maximum Size  | [O] + drag         | [O] + drag         |
| Brush: Change Minimum Size  | [Shift]+[O] + drag | [Shift]+[O] + drag |
| Brush: Connect stroke   | [Ctrl]             | [Command]          |
| Brush: Straight Line  | [Shift] + drag     | [Shift] + drag     |
| Brush: Draw from last click   | [Alt]              | [Alt]              |
| Eraser  | [Alt]+[E]          | [Ctrl]+[E]         |
| Eraser: Change Maximum Size   | [O] + drag         | [O] + drag         |
| Eraser: Change Minimum Size   | [Shift]+[O] + drag | [Shift]+[O] + drag |

## Drawing

| Command  | Windows  | Mac OS X  |
|--|--|---|
| <b>Painting Tools</b>  |  |   |
| Close Gap  | [Alt]+[C]  | [Alt]+[C]   |
| Close Gap: Use line end, not closest point, to close gap                     | [Shift]  | [Shift]   |
| Dropper  | [Alt]+[D]  | [Alt]+[D]   |
| Paint  | [Alt]+[I]  | [Ctrl]+[I]  |
| Paint Unpainted  | [Alt]+[Y]  | [Alt]+[Y]   |
| Stroke   | [Alt]+[V]  | [Alt]+[V]   |
| Stroke: Connect stroke   | [Alt]  | [Alt]   |
| Stroke: Force straight line  | [Shift]  | [Shift]   |
| Unpaint  | [Alt]+[U]  | [Ctrl]+[U]  |
| Unpaint: Unpaint all except the clicked zone                                 | [Shift]  | [Shift]   |
| Toggle marquee and lasso selection tool (Paint, Paint Unpainted and Unpaint) | [Alt]  | [Alt]   |
| <b>Zoom Tool</b>   |  |   |
| Zoom   | [Alt]+[Z]  | [Alt]+[Z]   |
| Zoom: Zoom out   | [Alt]  | [Alt]   |
| <b>View</b>  |  |   |
| Backlight  | [A]  | [A]   |
| Light Table  | [Shift]+[L]  | [Shift]+[L]   |
| Onion Skin: Next Drawings  | [Ctrl]+[`]<br>[Ctrl]+[1]<br>[Ctrl]+[2]<br>[Ctrl]+[3] | [Ctrl]+[`]<br>[Command]+[1]<br>[Command]+[2]<br>[Command]+[3] |
| Onion Skin: Previous Drawings  | [~]<br>[!]<br>[@]<br>[#]                             | [~]<br>[!]<br>[@]<br>[#]                                      |
| Preview Line and Colour Art  | [P]  | [P]   |
| Rotary Table   | [Ctrl]+[Alt]<br>+click                               | [Command]+[Alt]<br>+click                                     |
| Show Grid  | [Ctrl]+[']   | [Command]+[']   |
| Show Onion Skin  | [Alt]+[O]  | [Alt]+[O]   |
| Show Strokes   | [K]  | [K]   |



## Drawing

| Command                        | Windows | Mac OS X |
|--------------------------------|---------|----------|
| Switch to Colour Art/ Line Art | [L]     | [L]      |

## Model View

| Command        | Windows   | Mac OS X  |
|----------------|-----------|-----------|
| Unload         | [Delete]  | [Delete]  |
| Dropper        | [Alt]+[D] | [Alt]+[D] |
| Zoom           | [Alt]+[Z] | [Alt]+[Z] |
| Next Model     | [G]       | [G]       |
| Previous Model | [F]       | [F]       |

## XSheet View

| Command | Windows | Mac OS X |
|---------|---------|----------|
|---------|---------|----------|

### Columns

|            |             |             |
|------------|-------------|-------------|
| Add Column | [Shift]+[C] | [Shift]+[C] |
|------------|-------------|-------------|

### Edit

|                       |                 |     |
|-----------------------|-----------------|-----|
| Insert/Overwrite Mode | [Insert] or [I] | [I] |
|-----------------------|-----------------|-----|

### Exposure

|                         |            |               |
|-------------------------|------------|---------------|
| Clear Exposure and Pull | [Z]        | [Z]           |
| Decrease Exposure       | [-]        | [-]           |
| Fill Selection          | [Ctrl]+[T] | [Command]+[T] |
| Insert Blank Cell       | [X]        | [X]           |
| Increase Exposure       | [+]        | [+]           |
| Sequence Fill           | [Ctrl]+[M] | [Command]+[M] |

### Frames

|                             |            |               |
|-----------------------------|------------|---------------|
| Add Frames After Selection  | [Ctrl]+[H] | [Ctrl]+[H]    |
| Add Frames Before Selection | [Ctrl]+[G] | [Command]+[G] |