



Toon Boom Harmony21 Paint Application Keyboard Shortcuts



TOON BOOM ANIMATION INC.
4200 St.Laurent Blvd, Suite 1020
Montreal, Quebec, Canada
H2W 2R2

+1 514 278 8666
contact@toonboom.com
toonboom.com

Legal Notices

Toon Boom Animation Inc.
4200 Saint-Laurent, Suite 1020
Montreal, Quebec, Canada
H2W 2R2

Tel: +1 514 278 8666

Fax: +1 514 278 2666

toonboom.com

Disclaimer

The content of this document is the property of Toon Boom Animation Inc. and is copyrighted. Any reproduction in whole or in part is strictly prohibited.

The content of this document is covered by a specific limited warranty and exclusions and limit of liability under the applicable License Agreement as supplemented by the special terms and conditions for Adobe®Flash® File Format (SWF). For details, refer to the License Agreement and to those special terms and conditions.

Trademarks

Toon Boom® is a registered trademark. Harmony™ and the Toon Boom logo are trademarks of Toon Boom Animation Inc. All other trademarks of the property of their respective owners.

Publication Date

07-03-2021

Copyright © 2021 Toon Boom Animation Inc., a Corus Entertainment Inc. company. All rights reserved.

Table of Contents

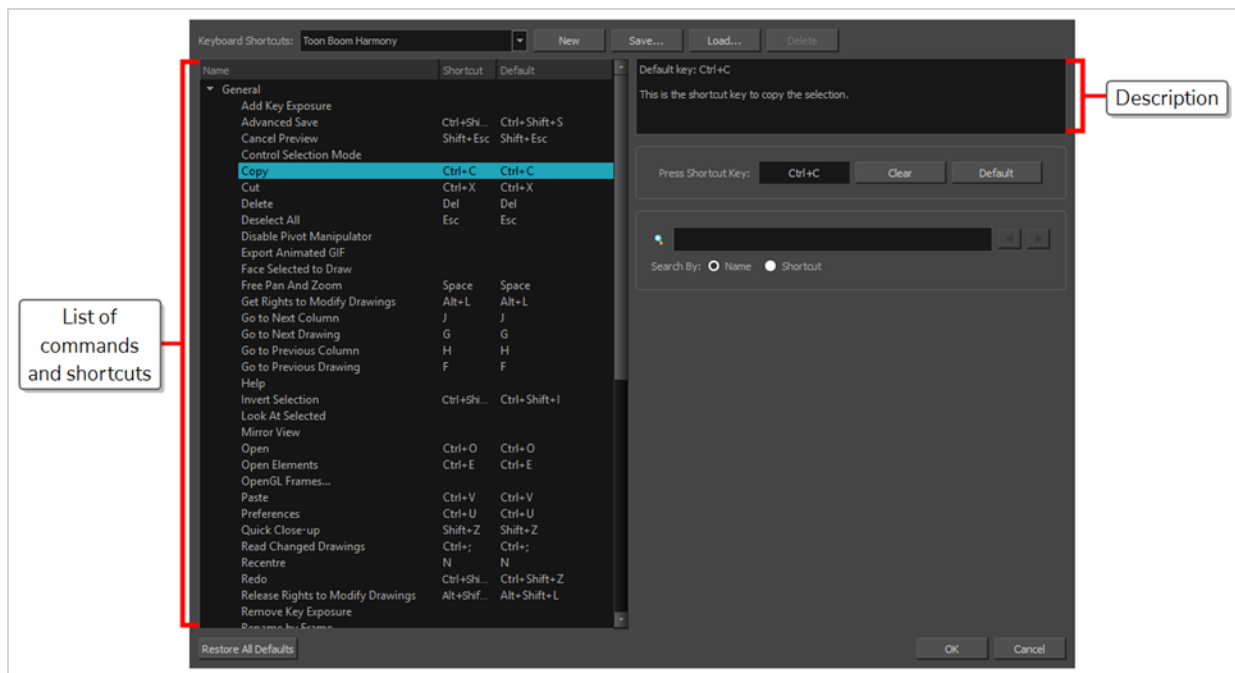
| | |
|--|-----------|
| Table of Contents | 2 |
| About Keyboard Shortcuts | 4 |
| Accessing the Keyboard Shortcuts Dialog | 6 |
| About Keyboard Shortcut Sets | 8 |
| Switching Between Shortcut Sets | 9 |
| Creating a Keyboard Shortcut Set | 10 |
| Deleting a Keyboard Shortcut Set | 11 |
| Exporting Keyboard Shortcuts | 12 |
| Importing Keyboard Shortcuts | 13 |
| Searching for Keyboard Shortcuts | 14 |
| Customizing Keyboard Shortcuts | 16 |
| Resetting Keyboard Shortcuts | 18 |
| Default Keyboard Shortcuts | 20 |
| General Keyboard Shortcuts | 21 |
| Colour Management Keyboard Shortcuts | 25 |
| Drawing Mode Keyboard Shortcuts | 26 |
| Tool Presets Keyboard Shortcuts | 37 |
| Shift and Trace Keyboard Shortcuts | 38 |
| Gaming Keyboard Shortcuts | 39 |
| Timesheet Keyboard Shortcuts | 40 |
| Mini Playback Keyboard Shortcuts | 42 |

About Keyboard Shortcuts

Harmony uses keyboard shortcuts to allow you to quickly use commands you are familiar with without having to browse through menus and toolbars. Learning the keyboard shortcuts for the commands you use the most often can be a great way to increase your productivity with Harmony.

Using the Keyboard Shortcuts dialog, you can:

- Check which keyboard shortcuts are assigned to which commands
- Search through commands and keyboard shortcuts
- Customize existing keyboard shortcuts
- Assign keyboard shortcuts to commands that don't have any
- Save keyboard shortcuts as presets
- Switch between keyboard shortcut presets
- Export and import keyboard shortcut configurations



Accessing the Keyboard Shortcuts Dialog

You can access the Keyboard Shortcuts dialog from the **Edit** menu on Windows and GNU/Linux, or from the **Harmony [Edition]** menu on macOS. The Keyboard Shortcuts menu item is just below the Preferences menu item.

How to open the Keyboard Shortcuts dialog box

1. Do one of the following:
 - **Windows or GNU/Linux:** In the top menu, select **Edit > Keyboard Shortcuts**.
 - **macOS:** In the top menu, select **Harmony [Edition] > Keyboard Shortcuts**.

About Keyboard Shortcut Sets

Harmony comes preloaded with different sets of keyboard shortcut configurations:

- **Toon Boom Harmony:** The default keyboard shortcuts for Harmony. When the Harmony documentation refers to a specific keyboard shortcut, it refers to the keyboard shortcuts in this preset.
- **Adobe Flash:** A preset that likens the default keyboard shortcut configuration in the Adobe Animate software.
- **Toon Boom Studio:** A preset that likens the default keyboard shortcut configuration for Toon Boom Studio, a legacy Toon Boom software.

You can quickly switch between keyboard shortcut sets in the Keyboard Shortcuts dialog. You can also create your own keyboard shortcut sets. Keyboard shortcut sets can be saved directly to your preferences, along with the shortcut presets that are preloaded in Harmony. They can also be exported as XML files and imported later or shared with other users.

Switching Between Shortcut Sets

You can instantly switch from one keyboard shortcut set to another in the Keyboard Shortcuts dialog.

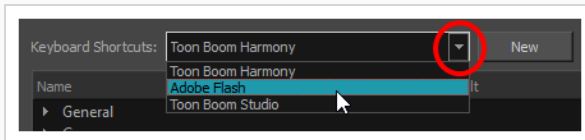


NOTE

Switching to a different keyboard shortcut set will not discard your current keyboard shortcut configuration. Your keyboard shortcut configuration is saved to the currently selected keyboard shortcut set. Hence, you can return to your old configuration simply by switching back to the previously used keyboard shortcut set.

How to switch between keyboard shortcut sets

1. Do one of the following to open the Keyboard Shortcuts dialog:
 - **Windows or GNU/Linux:** In the top menu, select **Edit > Keyboard Shortcuts**.
 - **macOS:** In the top menu, select **Harmony [Edition] > Keyboard Shortcuts**.
2. In the top-left corner of the Keyboard Shortcuts dialog, open the **Keyboard Shortcuts:** drop-down and select the preset you want to use.



3. Click on **OK**.

Creating a Keyboard Shortcut Set

You can create your own keyboard short cut sets and add them to the **Keyboard Shortcuts:** drop-down menu of the Keyboard Shortcuts dialog.

How to create a keyboard shortcut set

1. Do one of the following to open the Keyboard Shortcuts dialog:
 - **Windows or GNU/Linux:** In the top menu, select **Edit > Keyboard Shortcuts**.
 - **macOS:** In the top menu, select **Harmony [Edition] > Keyboard Shortcuts**.
2. In the list of commands and keyboard shortcuts, configure each keyboard shortcut the way you want them in your preset.
3. Near the top of the Keyboard Shortcuts dialog, click on the **New** button.
4. In the Keyboard Shortcut Set dialog, type in a name for your keyboard shortcut preset.
5. Click **OK**.

The keyboard shortcut set is now in the **Keyboard Shortcuts:** drop-down. Selecting it will load the keyboard shortcuts configuration you had when you created it.

Deleting a Keyboard Shortcut Set

You can delete a custom keyboard shortcut set from the **Keyboard Shortcuts:** drop-down in the Keyboard Shortcuts dialog.



NOTE

You can only delete custom keyboard shortcut sets that you created or imported. You cannot delete the keyboard shortcut sets that are preloaded with Harmony.

How to delete a keyboard shortcut set

1. Do one of the following to open the Keyboard Shortcuts dialog:
 - **Windows or GNU/Linux:** In the top menu, select **Edit > Keyboard Shortcuts**.
 - **macOS:** In the top menu, select **Harmony [Edition] > Keyboard Shortcuts**.
2. In the **Keyboard Shortcuts:** drop-down, select the keyboard shortcut set that you want to delete.
3. At the right of the **Keyboard Shortcuts:** drop-down, click on the **Delete** button.
A confirmation prompt appears.
4. If you are sure you want to delete the selected keyboard shortcut set, click on **Yes**.
The selected keyboard shortcut set is removed from the **Keyboard Shortcuts:** drop-down.

Exporting Keyboard Shortcuts

You can export your current keyboard shortcut configuration into an XML file. You can reimport this file later to restore your configuration, or share it with project collaborators so that you all use the same keyboard shortcuts.



NOTE

When you export your keyboard shortcuts configuration, only the currently selected keyboard shortcuts set is exported.

How to export your keyboard shortcut configuration

1. Do one of the following to open the Keyboard Shortcuts dialog:
 - **Windows or GNU/Linux:** In the top menu, select **Edit > Keyboard Shortcuts**.
 - **macOS:** In the top menu, select **Harmony [Edition] > Keyboard Shortcuts**.
2. In the **Keyboard Shortcuts:** drop-down, make sure the keyboard shortcut set you want to export is selected.
3. At the right of the **Keyboard Shortcuts:** drop-down, click on the **Save...** button.
A save dialog appears.
4. Browse to the location where you want to save your keyboard shortcut file.
5. Type in the desired name for your keyboard shortcut file.
6. Click on **Save**.

The currently keyboard shortcut set has been exported as an XML file, in the selected location with the file name you gave it.

Importing Keyboard Shortcuts

You can import a keyboard shortcut configuration file exported from Harmony.



NOTES

- To export keyboard shortcuts into a file, see [Exporting Keyboard Shortcuts on page 12](#).
- When you import a keyboard shortcuts file, it is added to the list of keyboard shortcut sets in the Keyboard Shortcuts drop-down menu of the Keyboard Shortcuts dialog.

How to import a keyboard shortcut configuration file

1. Do one of the following to open the Keyboard Shortcuts dialog:
 - **Windows or GNU/Linux:** In the top menu, select **Edit > Keyboard Shortcuts**.
 - **macOS:** In the top menu, select **Harmony [Edition] > Keyboard Shortcuts**.
2. At the right of the **Keyboard Shortcuts:** drop-down, click on the **Load...** button.
An open dialog appears.
3. Browse to the directory where your keyboard shortcut file is located.
4. Select the keyboard shortcut file you want to import.
5. Click on **Open**.

The configuration selected keyboard shortcut file is loaded into the Keyboard Shortcuts dialog, and is added as a keyboard shortcut set in the **Keyboard Shortcuts:** drop-down menu.

Searching for Keyboard Shortcuts

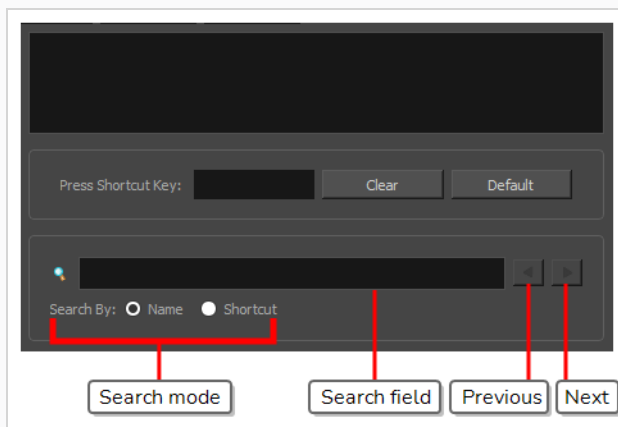
Harmony has a very extensive list of commands that can be assigned to keyboard shortcuts. Using the Search bar in the Keyboard Shortcuts dialog, you can:


- Search for a command, and its keyboard shortcut, by typing part or all of its name.
- Search for a command by typing part or all of its currently assigned keyboard shortcut.

How to search for a keyboard shortcut


1. Do one of the following to open the Keyboard Shortcuts dialog:

- **Windows or GNU/Linux:** In the top menu, select **Edit > Keyboard Shortcuts**.
- **macOS:** In the top menu, select **Harmony [Edition] > Keyboard Shortcuts**.



1. Below the  Search field, select the type of search you want to perform:

- **Name:** To search a command by typing part or all of its name.
- **Shortcut:** To search a command by typing part or all of its currently assigned keyboard shortcut.

2. In the  Search field, type in either part of the name of the command you want to find, or part of its currently assigned keyboard shortcut, depending on which option you chose in the previous step.



NOTES

- When searching for a command by its keyboard shortcut, if the keyboard shortcut is a combination, make sure that:
 - Modifier keys (Ctrl, Alt and Shift) are typed before other keys.
 - Join the keys by a + sign, with no space around it.

For example, to search for the **Copy** command, type **Ctrl+C**.

- On macOS, modifier keys such as Command (⌘), Control (⌘), Alt (⌘) and Shift (⇧) are represented by specific symbols that cannot be typed with a standard keyboard. You can copy and paste them from this document into the search field if you are reading this on a computer.

Harmony will immediately select the first command in the list that matches your search query.

3. If your query matches several commands in the list, uses the ◀ Previous and ▶ Next button right of the 🔍 Search field to navigate between matching commands.

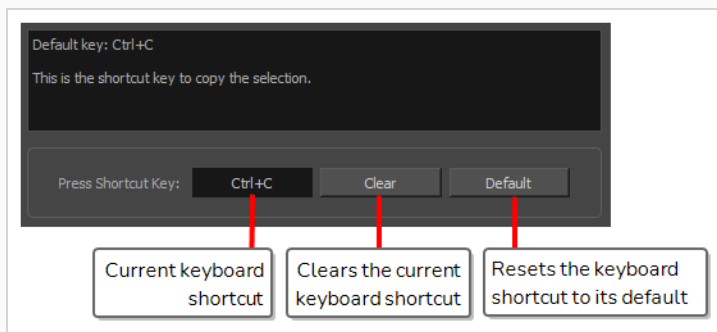
Customizing Keyboard Shortcuts

You can create your own keyboard shortcut for a tool or command, by assigning it to a certain key or combination of keys.

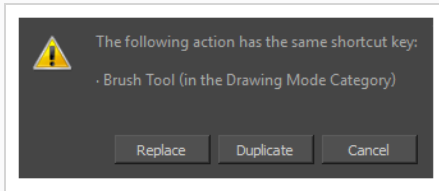
How to customize a keyboard shortcut

- Do one of the following to open the Keyboard Shortcuts dialog:
 - Windows or GNU/Linux:** In the top menu, select **Edit > Keyboard Shortcuts**.
 - macOS:** In the top menu, select **Harmony [Edition] > Keyboard Shortcuts**.
- In the list of commands and shortcuts to the left, locate and select the command for which you want to assign a keyboard shortcut—see [Searching for Keyboard Shortcuts](#).

The description of the selected command, as well as its currently assigned shortcut, appear in the right pane.



- Do one of the following:
 - If you want to assign a custom shortcut to the selected command, click inside the box just right of **Press Shortcut Key:**.
 - If you want the selected command to have no keyboard shortcut, click on **Clear**.
 - If you want the selected command to be assigned to its default keyboard shortcut, click on **Default**.
- If you are assigning a custom keyboard shortcut to the selected command, using your keyboard, type in the keyboard shortcut you want to use in the **Press Shortcut Key:** field.
- If the keyboard shortcut you typed in is already in use by another command, a dialog box will prompt you to decide what to do.



If this occurs, choose one the following options depending on what suits your case better:

- **Replace:** This will unassign the keyboard shortcut from the commands listed in the dialog box, and assign it to the selected command.
- **Duplicate:** Assigns the keyboard shortcut to the selected command, and lets other commands use the same keyboard shortcut.



IMPORTANT

Having several commands share the same keyboard shortcut could cause undesired behaviour.

- **Cancel:** Allows you to attempt assigning a different keyboard shortcut to the selected command.

Resetting Keyboard Shortcuts

You can reset the configuration of your keyboard shortcuts to the default values for the selected keyboard shortcut set.



IMPORTANT

This will replace your current keyboard shortcut configuration and discard any custom keyboard shortcut you created.

How to reset your keyboard shortcuts configuration

1. Do one of the following to open the Keyboard Shortcuts dialog:
 - **Windows or GNU/Linux:** In the top menu, select **Edit > Keyboard Shortcuts**.
 - **macOS:** In the top menu, select **Harmony [Edition] > Keyboard Shortcuts**.
2. In the **Keyboard Shortcuts:** drop-down, make sure the keyboard shortcut set that you want to restore to its default configuration is selected.
3. In the bottom-left corner of the Keyboard Shortcuts dialog, click on **Restore All Defaults**.
A confirmation prompt appears.
4. If you are sure you want to restore the default keyboard shortcut configuration for the selected keyboard shortcut set, click on **Yes**.

All the commands in the list are now set to their default keyboard shortcut.

Default Keyboard Shortcuts

The following section lists all of the default keyboard shortcuts for Harmony.

To make it easier to search for specific keyboard shortcuts, the shortcuts have been divided and grouped into sections.

| | |
|--|----|
| General Keyboard Shortcuts | 21 |
| Colour Management Keyboard Shortcuts | 25 |
| Drawing Mode Keyboard Shortcuts | 26 |
| Tool Presets Keyboard Shortcuts | 37 |
| Shift and Trace Keyboard Shortcuts | 38 |
| Gaming Keyboard Shortcuts | 39 |
| Timesheet Keyboard Shortcuts | 40 |
| Mini Playback Keyboard Shortcuts | 42 |

General Keyboard Shortcuts

| Command | Description | Windows/Linux | macOS | My Shortcut |
|-----------------------|--|------------------|---------------|-------------|
| Advanced Save | This is the shortcut to open the Advanced Save dialog box. This dialog box is used to save specific parts of a scene (scene data, palette lists, palettes and drawings). | Ctrl + Shift + S | Shift + ⌘ + S | |
| Cancel Preview | This is the shortcut key to cancel the automatic preview. | Shift + Esc | Shift + Esc | |
| Copy | This is the shortcut key to copy the selection. | Ctrl + C | ⌘ + C | |
| Cut | This is the shortcut key to cut the selection. | Ctrl + X | ⌘ + X | |
| Delete | This is the shortcut key to delete the selection. | Del | Backspace | |
| Deselect All | This is the shortcut key to deselect all selected objects. | Esc | Esc | |
| Export Animated GIF | Use this shortcut to open the Export Animated GIF window. | | | |
| Free Pan and Zoom | This is the shortcut key to pan and zoom the current view. | Space | Space | |
| Go to Next Column | Go to Next Column | J | J | |
| Go to Next Drawing | Go to Next Drawing | G | G | |
| Go to Previous Column | Go to Previous Column | H | H | |

| Command | Description | Windows/Linux | macOS | My Shortcut |
|------------------------|---|------------------|------------------|-------------|
| Go to Previous Drawing | Go to Previous Drawing | F | F | |
| Help | This is the shortcut to the Online Help | | | |
| Invert Selection | This is the shortcut key to invert the selection in the current view. | Ctrl + Shift + I | Shift + ⌘ + I | |
| New | This is the shortcut to create a new scene. | Ctrl + N | ⌘ + N | |
| Open | This is the shortcut to open a scene or open drawings in paint mode. | Ctrl + O | ⌘ + O | |
| Open Elements | This is the shortcut to open elements in paint mode. | Ctrl + E | ⌘ + E | |
| Paste | This is the shortcut key to paste the clipboard contents to the scene. | Ctrl + V | ⌘ + V | |
| Peg Selection Mode | This is the shortcut key to toggle the peg selection mode for the transform tool. | | | |
| Preferences | Launches the preferences dialog. | Ctrl + U | ⌘ + U | |
| Quick Close-up | This toggles between a global view and a close-up view. | Shift + Z | Shift + Z | |
| Recentre | This is the shortcut key to recentre the view on the mouse pointer in the current view. | N | N | |
| Redo | This is the shortcut key to redo the an operation that was undone. | Ctrl + Shift + Z | Ctrl + Shift + Z | |

| Command | Description | Windows/Linux | macOS | My Shortcut |
|------------------------------|--|----------------------------------|----------------------------------|-------------|
| Remove Art Outside Selection | This is the shortcut key to delete the selection. | Shift + Del or Shift + Backspace | Shift + Del or Shift + Backspace | |
| Reset Pan | This is the shortcut key to recentre the current view. | Shift + N | Shift + N | |
| Reset Rotation | This is the shortcut to reset the rotation of the current view. | Shift + X | Shift + X | |
| Reset View | This is the shortcut key to reset the pan, the zoom and the rotation in the current view. | Shift + M | Shift + M | |
| Reset Zoom | This is the shortcut key to reset the zoom level of the current view. | | | |
| Rotate View CCW | This is the shortcut key to rotate the view counter clock-wise. | | | |
| Rotate View CW | This is the shortcut key to rotate the view clock-wise. | | | |
| Save | This is the shortcut to save everything in a scene (scene data, palette lists, palettes and drawings). | Ctrl + S | ⌘ + S | |
| Select All | This is the shortcut key to select everything in the current view. | Ctrl + A | ⌘ + A | |
| Shortcuts | Launches the shortcuts dialog. | | | |
| Show Colour Model | The shortcut key that opens/closes the Colour Model. | Shift+K | Shift+K | |
| Show Whats This | The shortcut key to Help. | F1 | ⌘ + / | |

| Command | Description | Windows/Linux | macOS | My Shortcut |
|--|--|---------------|-------|-------------|
| Toggle Auto-Get-Rights-to-Modify-Palette-Lists | This is the shortcut key to toggle the automatic locking of palette lists. | | | |
| Toggle Auto-Get-Rights-to-Modify-Palettes | This is the shortcut key to toggle the automatic locking of palettes. | | | |
| Undo | This is the shortcut key to undo the previous operation. | Ctrl + Z | ⌘ + Z | |
| Zoom In | This is the shortcut key to zoom-in the current view. | 2 | 2 | |
| Zoom Out | This is the shortcut key to zoom-out the current view. | 1 | 1 | |

Colour Management Keyboard Shortcuts

| Command | Description | Windows/Linux | macOS | My Shortcut |
|-----------------------------------|---|---------------|---------|-------------|
| Get Rights to Modify All Palettes | Shortcut key for the Get Rights to Modify All Palettes command. | Alt + L | Alt + L | |
| Palette Go to Next Colour | Shortcut to change the current colour to the next colour. | | | |
| Palette Go to Previous Colour | Shortcut to change the current colour to the previous colour. | | | |
| Protect Colour Value | Shortcut to toggle on/off Protect Colour on selected colour pots. | | | |
| Recolour Drawing... | Shortcut to replace current colour in drawings | | | |

Drawing Mode Keyboard Shortcuts

| Command | Description | Windows/Linux | macOS | My Shortcut |
|--------------------------------------|---|---------------|---------|-------------|
| Activate Magnifier | Activate Magnifier temporarily or toggle it permanently if pressed with ALT. | | | |
| Apply Tool to All Frames | Turn on and off the Apply to All Frames mode. When Apply to All Frames is on, some operations will apply to all frames on the selected drawing layers. | Alt + A | Alt + A | |
| Apply Tool to Line and Colour Art | Turn on and off the Apply to Line and Colour Art mode. When Apply to Line and Colour Art is on, some operations will apply to all art layers of the drawing. | Shift+Q | Shift+Q | |
| Apply to Onion Skin Range | Turn on and off the Apply to Onion Skin Range mode. When Apply to Onion Skin Range is on, some operations will apply to all the drawings visible in the onion skin. | | | |
| Apply Tool to Synced Drawing Layers | Turn on and off the Apply to Synced Drawing Layers mode. When Apply to Synced Drawing Layers is on, some operations will apply to the current drawing layer and all layers synced with that layer in the Camera View. | | | |
| Apply Tool to Visible Drawing Layers | Turn on and off the Apply to Visible Drawing Layers mode. When Apply to Visible Drawing Layers is on, some operations will apply to all visible drawing layers in the | | | |

| Command | Description | Windows/Linux | macOS | My Shortcut |
|--|---|---------------------|------------------|-------------|
| | Camera View. | | | |
| Auto-Create Colour Art from Brush | Shortcut to toggle the Create Colour Art on Brush switch | Shift+F2 | Shift+F2 | |
| Automatically Fill Inside Regions | Automatically fill drawing shapes. | Ctrl + Shift + R | ⌘ + Shift + R | |
| Auto-Matte | Generate Auto-Matte. | | | |
| Bring Forward | Bring the selected drawing element one step forward. | Ctrl + PgUp | ⌘ + PgUp | |
| Bring To Front | Bring the selected drawing element to the front. | Ctrl + Shift + PgUp | ⌘ + Shift + PgUp | |
| Brush Tool | Activate the Brush Tool in Brush Mode. | Alt + B | Alt + B | |
| Brush Tool (General) | Activate the Brush Tool. | | | |
| Centerline Editor Tool | Activate the Centerline Editor Tool. | Alt + W | Alt + W | |
| Change Bitmap Drawing Resolution | Change the resolution for the selected bitmap drawing(s) | | | |
| Change Vector Drawing Brush Resolution | Change the brush resolution for the selected vector drawing(s) | | | |
| Close Gap Interactive Tool | Pops up a dialog to adjust the size of gaps to be closed all at once. | Shift+F10 | | |

| Command | Description | Windows/Linux | macOS | My Shortcut |
|---------------------------------------|---|---------------|-------------|-------------|
| Close Gap Tool | Activate the Close Gap Tool. | Alt + C | Alt + C | |
| Colour Eyedropper Tool | Activate the Colour Eyedropper Tool. | Alt + D | Alt + D | |
| Contour Editor Tool | Activate the Contour Editor Tool. | Alt + Q | Alt + Q | |
| Convert Brush Strokes to Pencil Lines | Convert Brush to Pencil. | ^ | ^ | |
| Convert Pencil Lines to Brush Strokes | Convert Pencil Lines to Brush. | & | & | |
| Convert Strokes to Pencil Lines | Convert selected (invisible) strokes to pencil lines. | Shift + F12 | Shift + F12 | |
| Convert to Bitmap Drawing | Render the selected vector drawing(s) to generate a corresponding bitmap drawing(s) | | | |
| Convert to Vector Drawing | Vectorize the selected bitmap drawing(s) to generate a corresponding vector drawing (s) | | | |
| Create Colour Art from Line Art | Line Art To Colour Art. | * | * | |
| Crop Brush Textures | Crop and optimize the brush textures. | | | |
| Cutter Tool | Activate the Cutter Tool. | Alt + T | Alt + T | |
| Cycle Through Flatten Drawing | This shortcut cycles through the different drawing modes: | | | |

| Command | Description | Windows/Linux | macOS | My Shortcut |
|----------------------------------|---|------------------|-----------------|-------------|
| Modes | Normal, Flatten Latest and Auto Flatten | | | |
| Decrement Brush Size | Decrement Brush Size. | | | |
| Draw Behind | Toggle the Draw Behind mode for the current tool. | | | |
| Drawing Pivot Tool | This is the shortcut for the pivot tool. | Shift + P | Shift + P | |
| Edit Texture/Gradient Tool | Activate the Edit Texture/Gradient Tool | Shift + F3 | Shift + F3 | |
| Ellipse Tool | Activate the Ellipse Tool. | Alt + = | Alt + = | |
| Eraser Tool | Activate the Eraser Tool. | Alt + E | Alt + E | |
| Flatten | Flatten. | Alt + Shift + F | Alt + Shift + F | |
| Flatten and Remove Extra Strokes | Shortcut to flatten and remove the extra strokes | Ctrl + Shift + F | ⌘ + Shift + F | |
| Flatten Latest | Shortcut to toggle the draw top layer switch | | | |
| Hand Tool | Activate the Hand Tool. | | | |
| Increment Brush Size | Increment Brush Size. | | | |
| Ink Tool | Activate the Ink Tool. | | | |
| Join Pencil Lines | Join Pencil Lines. | Alt + Shift + J | Alt + Shift + J | |

| Command | Description | Windows/Linux | macOS | My Shortcut |
|------------------------|---|---------------|-----------|-------------|
| Light Table | The shortcut key that activates the Auto Light Table command. | Shift + L | Shift + L | |
| Line Tool | Activate the Line Tool. | Alt + \ | Alt + \ | |
| Merge Pencil Lines | Shortcut to merge selected pencil lines into a single pencil line. | | | |
| Onion Skin: 1 Next | The shortcut key that activates the Next Drawing command for the onion skin. | Ctrl + 1 | ⌘ + 1 | |
| Onion Skin: 1 Previous | The shortcut key that activates the Previous Drawing command for the onion skin. | ! | ! | |
| Onion Skin: 2 Next | The shortcut key that activates the Next Two Drawings command for the onion skin. | Ctrl + 2 | ⌘ + 2 | |
| Onion Skin: 2 Previous | The shortcut key that activates the Previous Two Drawings command for the onion skin. | @ | @ | |
| Onion Skin: 3 Next | The shortcut key that activates the Next Three Drawings command for the onion skin. | Ctrl + 3 | ⌘ + 3 | |
| Onion Skin: 3 Previous | The shortcut key that activates the Previous Three Drawings command for the onion skin. | # | # | |
| Onion Skin: Add 1 | The shortcut key that | | | |

| Command | Description | Windows/Linux | macOS | My Shortcut |
|-------------------------------|---|------------------------|---------------------|-------------|
| Next | activates the Add One Next Drawing command for the onion skin. | | | |
| Onion Skin: Add 1 Previous | The shortcut key that activates the Add One Previous Drawing command for the onion skin. | | | |
| Onion Skin: No Next | The shortcut key that activates the No Next Drawings command for the onion skin. | Ctrl + ` | ⌘ + ` | |
| Onion Skin: No Previous | The shortcut key that activates the No Previous Drawings command for the onion skin. | ~ | ~ | |
| Onion Skin: Reduce 1 Next | The shortcut key that activates the Reduce One Next Drawing command for the onion skin. | | | |
| Onion Skin: Reduce 1 Previous | The shortcut key that activates the Reduce One Previous Drawing command for the onion skin. | | | |
| Optimize | Combine the selected drawing's strokes. | Ctrl + Alt + Shift + C | ⌘ + Alt + Shift + C | |
| Paint and Remove Texture | Shortcut to toggle the Paint Over Texture switch | Shift + F6 | Shift + F6 | |
| Paint Tool | Activate the Paint Tool. | Alt + I | Alt + I | |
| Paint Tool (General) | Activate the Paint Tool without changing its mode. | | | |

| Command | Description | Windows/Linux | macOS | My Shortcut |
|-----------------------------------|---|------------------|---------------|-------------|
| Paint Unpainted Tool | Activate the Paint Tool in Paint Unpainted Mode. | Alt+Y | Alt+Y | |
| Pencil Editor Tool | Activate Pencil Editor Tool temporarily or permanently if pressed with ALT. | 8 | 8 | |
| Pencil Texture Eyedropper Tool | Activate the Pencil Texture Eyedropper Tool. | | | |
| Pencil Tool | Activate the Pencil Tool. | Alt + / | Alt + / | |
| Permanent Selection | Selects drawings in the specified area for all frames in the scene. | Ctrl + Shift + P | ⌘ + Shift + P | |
| Perspective Tool | This is the shortcut for the drawing perspective tool. | Alt + 0 | Alt + 0 | |
| Polyline Tool | Activate the Polyline Tool. | Alt + _ | Alt + _ | |
| Preview Line and Colour Arts | Shortcut key to toggle Preview Mode on and off in the Drawing View. In Preview Mode, all layers of the drawing are visible; only the active layer (Line Art or Colour Art) is visible when Preview Mode is off. | P | P | |
| Rectangle Tool | Activate the Rectangle Tool. | Alt + 7 | Alt + 7 | |
| Reduce Drawing Texture Resolution | Reduce drawing texture resolution. | | | |
| Remove Dirt | Shortcut to call the remove dirt function | Shift + D | Shift + D | |

| Command | Description | Windows/Linux | macOS | My Shortcut |
|---|---|---------------|---------|-------------|
| Remove Hair | Pops a dialog to adjust the length of hair to be removed. | | | |
| Remove Art Inside Selection | Removes art inside selection on current drawing | | | |
| Remove Art Inside Selection on All Drawings | Removes art inside selection on all drawings | | | |
| Removes Art Outside Selection | Removes art outside selection on current drawing | | | |
| Removes Art Outside Selection on All Drawings | Removes art outside selection on all drawings | | | |
| Repaint Brush Tool | Activate the Brush Tool in Repaint Mode. | Alt + X | Alt + X | |
| Repaint Tool | Activate the Paint Tool in Repaint Mode. | Alt + R | Alt + R | |
| Resize Pencil Style Tool | This is the shortcut for the tool to resize pencil. | O | O | |
| Rotate 180 | Rotate the drawing 180 degrees. | | | |
| Rotate 90 CCW | Rotate the drawing 90 degrees counterclockwise. | Ctrl + 7 | ⌘ + 7 | |
| Rotate 90 CW | Rotate the drawing 90 degrees clockwise. | Ctrl + 9 | ⌘ + 9 | |
| Rotate View Tool | Activate the Rotate View Tool. | | | |

| Command | Description | Windows/Linux | macOS | My Shortcut |
|--|---|-----------------------|--------------------|-------------|
| Select Strokes with Current Colour | This is the shortcut key to select all drawing objects in the active layer(s) of a drawing that are coloured with the current colour. | Ctrl + Shift + A | ⌘ + Shift + A | |
| Select Strokes with Current Pencil Texture | This is the shortcut key to select all drawing objects in the active layer(s) of a drawing that use the current pencil texture. | | | |
| Select Tool | Activate the Select Tool. | Alt + S | Alt + S | |
| Send Backward | Send the selected drawing element one step backward. | Ctrl + PgDown | ⌘ + PgDown | |
| Send to Back | Send the selected drawing element to the back. | Ctrl + Shift + PgDown | ⌘ + Shift + PgDown | |
| Show Grid | Show/hide the Drawing View grid by default. | Ctrl + ' | ⌘ + ' | |
| Show Grid Outline Only | Toggle between the display of the drawing view grid in outline or full field chart mode. | | | |
| Show Strokes | Shortcut key to the Show Strokes command. | K | K | |
| Show/Hide Contour Editor Controls | Show/Hide Rotation and Scale Controls | Alt+F5 | Alt+F5 | |
| Show/Hide Onion Skin | Toggles on and off the onion skin. | Alt + O | Alt + O | |
| Smooth | Smooth. | Alt + Shift + S | Alt + Shift + S | |

| Command | Description | Windows/Linux | macOS | My Shortcut |
|----------------------------------|--|-----------------|-----------------|-------------|
| Smooth Editor Tool | Activate the Smooth Editor Tool. | | | |
| Snap and Align | Use drawing bounding boxes for snapping and alignment. | Ctrl + Alt + , | ⌘+Alt + , | |
| Snap to Contour | Use drawing contours for snapping. | Ctrl + Alt + ; | ⌘+Alt + ; | |
| Snap to Grid | Snap drawings to the grid. | Ctrl + Alt + ' | ⌘ + Alt + ' | |
| Split Pencil Line | Split Pencil Line. | Alt+Shift+K | Alt+Shift+K | |
| Stamp Tool | Activate the Stamp tool. | | | |
| Stroke Tool | Activate the Stroke Tool. | Alt + V | Alt + V | |
| Switch to Line Art/Colour Art | Shortcut key to toggle between Line Art and Colour Art in a drawing. | L | L | |
| Switch to Overlay/Underlay Layer | Shortcut key to toggle between overlay and underlay layer in a drawing. | colon (:) | colon (:) | |
| Text Tool | Activate the Text Tool. | Alt + 9 | Alt + 9 | |
| Toggle Backlight | Shortcut key to turn the Backlight on and off in the Drawing View. | Alt + Shift + B | Alt + Shift + B | |
| Toggle Line Building Mode | Turn on and off the Pencil Tool Line Building Mode. This mode allows to append new pencil strokes to existing one when drawing with the Pencil Tool and Line Tool. | | | |

| Command | Description | Windows/Linux | macOS | My Shortcut |
|--------------------------|--|---------------|-----------|-------------|
| Toggle Protect Colours | Turn on and off the Respect Sticky Colours option. When Respect Sticky Colours is on, you cannot change the colour of objects painted with sticky colours. | Shift + S | Shift + S | |
| Toggle stabilizer on/off | Toggle the pen stabilizer on and off | | | |
| Unpaint Tool | Activate the Paint Tool in Unpaint Mode. | Alt + U | Alt + U | |
| Zoom Tool | Activate Zoom Tool temporarily or permanently if pressed with ALT. | Alt + Z | Alt + Z | |

Tool Presets Keyboard Shortcuts

| Command | Description | Windows/Linux | macOS | My Shortcut |
|--------------------------|--------------------------|---------------|-------|-------------|
| Tool Preset Shortcut #01 | Tool Preset Shortcut 1. | | | |
| Tool Preset Shortcut #02 | Tool Preset Shortcut 2. | | | |
| Tool Preset Shortcut #03 | Tool Preset Shortcut 3. | | | |
| Tool Preset Shortcut #04 | Tool Preset Shortcut 4. | | | |
| Tool Preset Shortcut #05 | Tool Preset Shortcut 5. | | | |
| Tool Preset Shortcut #06 | Tool Preset Shortcut 6. | | | |
| Tool Preset Shortcut #07 | Tool Preset Shortcut 7. | | | |
| Tool Preset Shortcut #08 | Tool Preset Shortcut 8. | | | |
| Tool Preset Shortcut #09 | Tool Preset Shortcut 9. | | | |
| Tool Preset Shortcut #10 | Tool Preset Shortcut 10. | | | |

Shift and Trace Keyboard Shortcuts



NOTE

These keyboard shortcuts work with the Shift and Trace tool which can be used in the Camera view, not the Shift and Trace functionality of the desk in the Drawing view.

| Command | Description | Windows/Linux | macOS | My Shortcut |
|--|---|---------------|-------|-------------|
| Reset Shift and Trace of All Drawings | Reset the shift and trace position of all drawings on the current drawing layer. | | | |
| Reset Shift and Trace of Selected Drawings | Reset the shift and trace position of the selected drawings. | | | |
| Shift and Trace Tool | Use the Shift and Trace Tool to change the position of drawings in the Camera View when Shift and Trace is enabled. If you assign 'Alt + a shortcut key', you can temporarily override the current tool by using the shortcut key without the Alt modifier. Using Alt + key will activate the Shift and Trace tool. | | | |
| Shift and Trace Rotate | Use this shortcut to temporarily override from any tool to the Rotate mode of the Shift and Trace tool. | | | |
| Shift and Trace Scale | Use this shortcut to temporarily override from any tool to the Scale mode of the Shift and Trace tool. | | | |

Gaming Keyboard Shortcuts

| Command | Description | Windows/Linux | macOS | My Shortcut |
|------------------|-----------------|---------------|-------|-------------|
| Select Group #01 | Select Group 01 | | | |
| Select Group #02 | Select Group 02 | | | |
| Select Group #03 | Select Group 03 | | | |
| Select Group #04 | Select Group 04 | | | |
| Select Group #05 | Select Group 05 | | | |
| Select Group #06 | Select Group 06 | | | |
| Select Group #07 | Select Group 07 | | | |
| Select Group #08 | Select Group 08 | | | |
| Select Group #09 | Select Group 09 | | | |
| Select Group #10 | Select Group 10 | | | |

Timesheet Keyboard Shortcuts

The following keyboard shortcuts are useful if you are working in a traditional Japanese animation pipeline. They use functionalities specific to the *Timesheet*, a special mode of the *Xsheet* view when using Harmony in Japanese.

| Command | Description | Windows/Linux | macOS | My Shortcut |
|--------------------|--|---------------|-------|-------------|
| Add Camera Column | Adds a Camera column. | | | |
| Add Camera Fairing | Adds a wiggle line marker in the Camera column for Fairing. | | | |
| Add Camera Pan | Adds a straight line marker in the Camera column for Pan. | | | |
| Add Camera Point | Adds a marker in the Camera column for a customized camera position. | | | |
| Add Camera Point A | Adds a marker in the Camera column for the A camera position. | | | |
| Add Camera Point B | Adds a marker in the Camera column for the B camera position. | | | |
| Add Camera Point C | Adds a marker in the Camera column for the C camera position. | | | |
| Add Slide Marker A | Adds an A marker in the Camera column for layer slides or movements. | | | |
| Add Slide Marker E | Adds an A marker in the Camera column for layer slides or movements. | | | |
| Add Slide Marker I | Adds an A marker in the Camera column for layer slides or movements. | | | |

| Command | Description | Windows/Linux | macOS | My Shortcut |
|---------------------------|---|---------------|-------|-------------|
| Add Slide Marker O | Adds an A marker in the Camera column for layer slides or movements. | | | |
| Add Slide Marker U | Adds an A marker in the Camera column for layer slides or movements. | | | |
| Add Sound Column | Adds a sound column named S. | | | |
| Clear Inbetween Markers | Clears the cell marker Inbetween, Reverse Inbetween or Reverse Reference. | | | |
| Export Timesheet to PDF | Exports the Timesheet information to a PDF file. | | | |
| Generate Cell Columns | Generates new columns from the selected columns, renames the drawing in ascending order and replaces inbetween markers with drawings. | | | |
| Mark as Breakdown | Marks the selected cell as a breakdown. | | | |
| Mark as Inbetween | Marks the selected cell as an inbetween. | | | |
| Mark as Key | Marks the selected cell as a key drawing. | | | |
| Mark as Reverse Inbetween | Marks the selected cell as a reverse inbetween. | | | |

Mini Playback Keyboard Shortcuts

| Command | Description | Windows/Linux | macOS | My Shortcut |
|----------------------|--------------------------------|---------------|-------|-------------|
| Mini Playback | Starts the mini playback | | | |
| Mini Playback Dialog | Opens the mini playback dialog | | | |