



Toon Boom Harmony 17 Paint Keyboard Shortcuts



TOON BOOM ANIMATION INC.
4200 Saint-Laurent, Suite 1020
Montreal, Quebec, Canada
H2W 2R2

+1 514 278 8666
contact@toonboom.com
toonboom.com

Legal Notices

Toon Boom Animation Inc.
4200 Saint-Laurent, Suite 1020
Montreal, Quebec, Canada
H2W 2R2

Tel: +1 514 278 8666
Fax: +1 514 278 2666

toonboom.com

Disclaimer

The content of this document is the property of Toon Boom Animation Inc. and is copyrighted. Any reproduction in whole or in part is strictly prohibited.

The content of this document is covered by a specific limited warranty and exclusions and limit of liability under the applicable License Agreement as supplemented by the special terms and conditions for Adobe® Flash® File Format (SWF). For details, refer to the License Agreement and to those special terms and conditions.

Trademarks

Toon Boom® is a registered trademark. Harmony™ and the Toon Boom logo are trademarks of Toon Boom Animation Inc. All other trademarks of the property of their respective owners.

Publication Date

06-17-2019

Copyright © 2019 Toon Boom Animation Inc., a Corus Entertainment Inc. company. All rights reserved.

Table of Contents

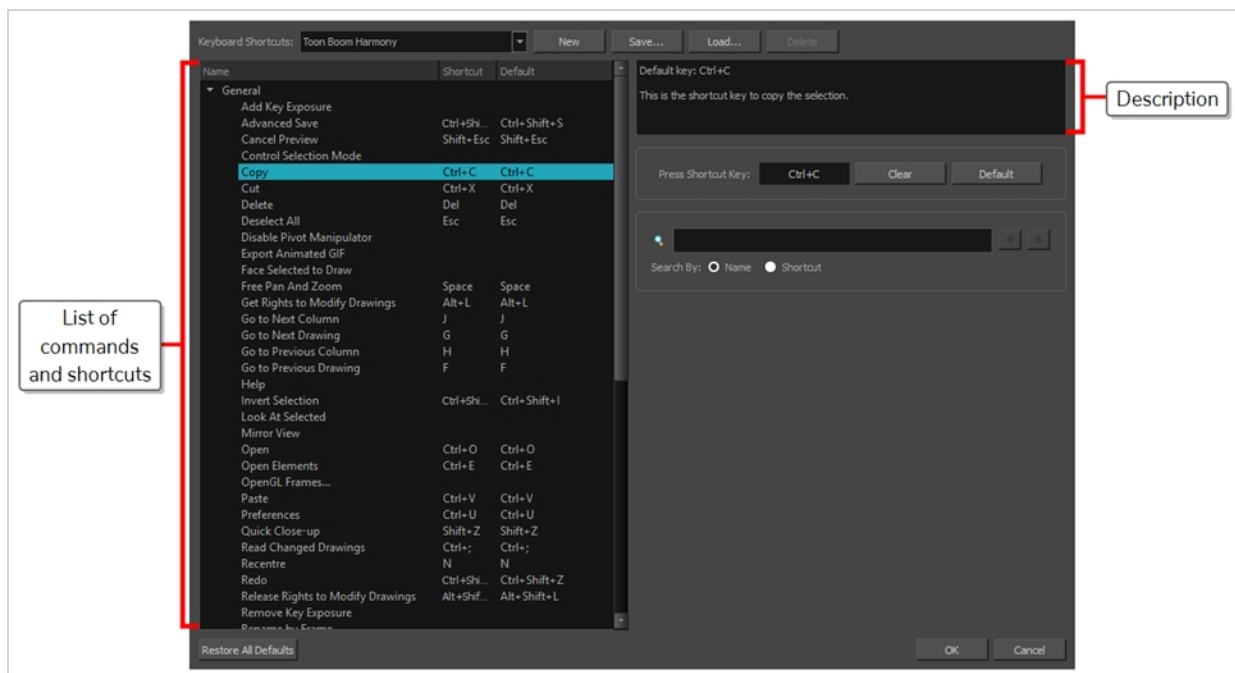
Table of Contents	2
About Keyboard Shortcuts	4
Accessing the Keyboard Shortcuts Dialog	5
About Keyboard Shortcut Sets	6
Switching Between Shortcut Sets	7
Creating a Keyboard Shortcut Set	8
Deleting a Keyboard Shortcut Set	9
Exporting Keyboard Shortcuts	10
Importing Keyboard Shortcuts	11
Searching for Keyboard Shortcuts	12
Customizing Keyboard Shortcuts	14
Resetting Keyboard Shortcuts	16
Default Keyboard Shortcuts	18
General Keyboard Shortcuts	20
Colour Management Keyboard Shortcuts	24
Drawing Mode Keyboard Shortcuts	26
Tool Presets Keyboard Shortcuts	38
Shift and Trace Keyboard Shortcuts	39
Gaming Keyboard Shortcuts	40
Timesheet Keyboard Shortcuts	41
Mini Playback Keyboard Shortcuts	43

About Keyboard Shortcuts

Harmony uses keyboard shortcuts to allow you to quickly use commands you are familiar with without having to browse through menus and toolbars. Learning the keyboard shortcuts for the commands you use the most often can be a great way to increase your productivity with Harmony.

Using the Keyboard Shortcuts dialog, you can:

- Check which keyboard shortcuts are assigned to which commands
- Search through commands and keyboard shortcuts
- Customize existing keyboard shortcuts
- Assign keyboard shortcuts to commands that don't have any
- Save keyboard shortcuts as presets
- Switch between keyboard shortcut presets
- Export and import keyboard shortcut configurations



Accessing the Keyboard Shortcuts Dialog

You can access the Keyboard Shortcuts dialog from the **Edit** menu on Windows and GNU/Linux, or from the **Harmony [Edition]** menu on macOS. The menu item for the Keyboard Shortcuts dialog is just below the menu item for the Preferences dialog.

How to open the Keyboard Shortcuts dialog box

1. Do one of the following:
 - **Windows or GNU/Linux:** In the top menu, select **Edit > Keyboard Shortcuts**.
 - **macOS:** In the top menu, select **Harmony [Edition] > Keyboard Shortcuts**.

About Keyboard Shortcut Sets

Harmony comes preloaded with different sets of keyboard shortcut configurations:

- **Toon Boom Harmony:** The default keyboard shortcuts for Harmony. The Harmony documentation refers to the keyboard shortcuts in this preset every time it mentions a specific keyboard shortcut.
- **Adobe Flash:** A preset that likens the default keyboard shortcut configuration in the Adobe Animate software.
- **Toon Boom Studio:** A preset that likens the default keyboard shortcut configuration for Toon Boom Studio, a legacy Toon Boom software.

You can quickly switch between keyboard shortcut sets in the Keyboard Shortcuts dialog. You can also create your own keyboard shortcut sets. Keyboard shortcut sets can be saved directly to your preferences, along with the shortcut presets that are preloaded in Harmony, or they can be exported as XML files and imported later, or shared with other users.

Switching Between Shortcut Sets

You can instantly switch from one keyboard shortcut set to another in the Keyboard Shortcuts dialog.

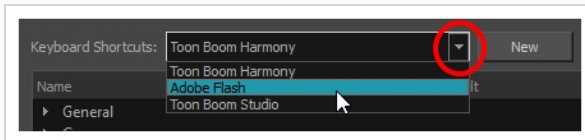


NOTE

Switching to a different keyboard shortcut set will not discard your current keyboard shortcut configuration. Your keyboard shortcut configuration is saved to the currently selected keyboard shortcut set. Hence, you can return to your old configuration simply by switching back to the previously used keyboard shortcut set.

How to switch between keyboard shortcut sets

1. Do one of the following to open the Keyboard Shortcuts dialog:
 - **Windows or GNU/Linux:** In the top menu, select **Edit > Keyboard Shortcuts**.
 - **macOS:** In the top menu, select **Harmony [Edition] > Keyboard Shortcuts**.
2. In the top-left corner of the Keyboard Shortcuts dialog, open the **Keyboard Shortcuts:** drop-down and select the preset you want to use.



3. Click on **OK**.

Creating a Keyboard Shortcut Set

You can create your own keyboard short cut sets and add them to the **Keyboard Shortcuts:** drop-down menu of the Keyboard Shortcuts dialog.

How to create a keyboard shortcut set

1. Do one of the following to open the Keyboard Shortcuts dialog:
 - **Windows or GNU/Linux:** In the top menu, select **Edit > Keyboard Shortcuts**.
 - **macOS:** In the top menu, select **Harmony [Edition] > Keyboard Shortcuts**.
2. In the list of commands and keyboard shortcuts, configure each keyboard shortcut the way you want them in your preset.
3. Near the top of the Keyboard Shortcuts dialog, click on the **New...** button.
4. In the Keyboard Shortcut Set dialog, type in a name for your keyboard shortcut preset.
5. Click **OK**.

The keyboard shortcut set is now in the **Keyboard Shortcuts:** drop-down. Selecting it will load the keyboard shortcuts configuration you had when you created it.

Deleting a Keyboard Shortcut Set

You can delete a custom keyboard shortcut set from the **Keyboard Shortcuts:** drop-down in the Keyboard Shortcuts dialog.



NOTE

You can only delete custom keyboard shortcut sets that you created or imported. You cannot delete the keyboard shortcut sets that are preloaded with Harmony.

How to delete a keyboard shortcut set

1. Do one of the following to open the Keyboard Shortcuts dialog:
 - **Windows or GNU/Linux:** In the top menu, select **Edit > Keyboard Shortcuts**.
 - **macOS:** In the top menu, select **Harmony [Edition] > Keyboard Shortcuts**.
2. In the **Keyboard Shortcuts:** drop-down, select the keyboard shortcut set that you want to delete.
3. At the right of the **Keyboard Shortcuts:** drop-down, click on the **Delete** button.

A confirmation prompt appears.
4. If you are sure you want to delete the selected keyboard shortcut set, click on **Yes**.

The selected keyboard shortcut set is removed from the **Keyboard Shortcuts:** drop-down.

Exporting Keyboard Shortcuts

You can export your current keyboard shortcut configuration into an XML file. You can reimport this file later to restore your configuration, or share it with project collaborators so that you all use the same keyboard shortcuts.



NOTE

When you export your keyboard shortcuts configuration, only the currently selected keyboard shortcuts set is exported.

How to export your keyboard shortcut configuration

1. Do one of the following to open the Keyboard Shortcuts dialog:
 - **Windows or GNU/Linux:** In the top menu, select **Edit > Keyboard Shortcuts**.
 - **macOS:** In the top menu, select **Harmony [Edition] > Keyboard Shortcuts**.
2. In the **Keyboard Shortcuts:** drop-down, make sure the keyboard shortcut set you want to export is selected.
3. At the right of the **Keyboard Shortcuts:** drop-down, click on the **Save...** button.
A save dialog appears.
4. Browse to the location where you want to save your keyboard shortcut file.
5. Type in the desired name for your keyboard shortcut file.
6. Click on **Save**.

The currently keyboard shortcut set has been exported as an XML file, in the selected location with the file name you gave it.

Importing Keyboard Shortcuts

You can import a keyboard shortcut configuration file exported from Harmony.



NOTES

- To export keyboard shortcuts into a file, see [Exporting Keyboard Shortcuts on page 10](#).
- When you import a keyboard shortcuts file, it is added to the list of keyboard shortcut sets in the Keyboard Shortcuts drop-down menu of the Keyboard Shortcuts dialog.

How to import a keyboard shortcut configuration file

1. Do one of the following to open the Keyboard Shortcuts dialog:
 - **Windows or GNU/Linux:** In the top menu, select **Edit > Keyboard Shortcuts**.
 - **macOS:** In the top menu, select **Harmony [Edition] > Keyboard Shortcuts**.
2. At the right of the **Keyboard Shortcuts:** drop-down, click on the **Load...** button.
An open dialog appears.
3. Browse to the directory where your keyboard shortcut file is located.
4. Select the keyboard shortcut file you want to import.
5. Click on **Open**.

The configuration selected keyboard shortcut file is loaded into the Keyboard Shortcuts dialog, and is added as a keyboard shortcut set in the **Keyboard Shortcuts:** drop-down menu.

Searching for Keyboard Shortcuts

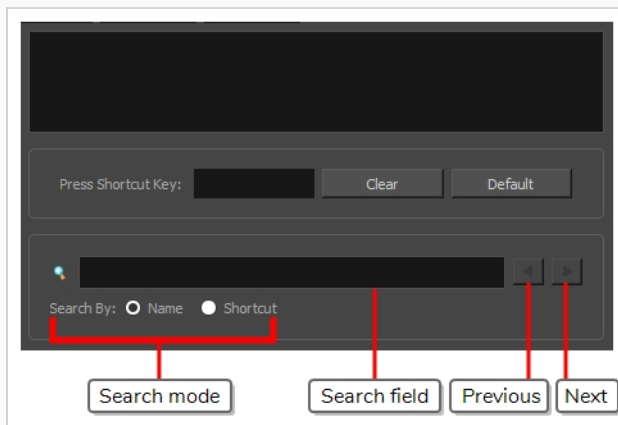
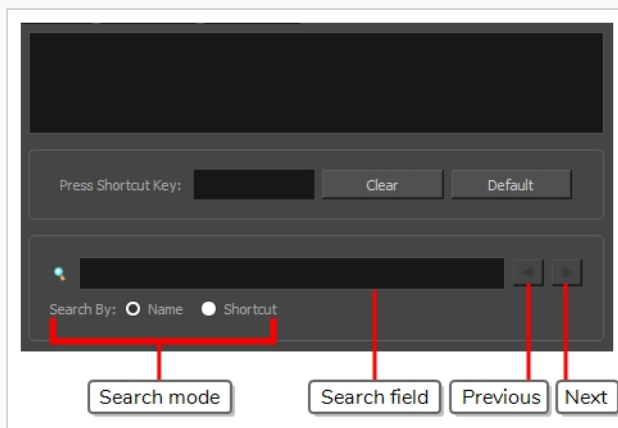
Harmony has a very extensive list of commands that can be assigned to keyboard shortcuts. Using the Search bar in the Keyboard Shortcuts dialog, you can:



- Search for a command, and its keyboard shortcut, by typing part or all of its name.
- Search for a command by typing part or all of its currently assigned keyboard shortcut.

How to search for a keyboard shortcut

1. Do one of the following to open the Keyboard Shortcuts dialog:

- **Windows or GNU/Linux:** In the top menu, select **Edit > Keyboard Shortcuts**.
- **macOS:** In the top menu, select **Harmony [Edition] > Keyboard Shortcuts**.



1. Below the  Search field, select the type of search you want to perform:
 - **Name:** To search a command by typing part or all of its name.
 - **Shortcut:** To search a command by typing part or all of its currently assigned keyboard shortcut.
2. In the  Search field, type in either part of the name of the command you want to find, or part of its currently assigned keyboard shortcut, depending on which option you chose in the previous step.




NOTES

- When searching for a command by its keyboard shortcut, if the keyboard shortcut is a combination, make sure that:
 - Modifier keys (Ctrl, Alt and Shift) are typed before other keys.
 - Join different keys by a + sign, with no space.

For example, to search for the **Copy** command, type **Ctrl+C**.

- On macOS, modifier keys such as Command (⌘), Control (⌘), Alt (⌘) and Shift (⇧) are represented by specific symbols that cannot be typed with a standard keyboard. You can copy and paste them from this document into the search field if you are reading this on a computer.

Harmony will immediately select the first command in the list that matches your search query.

3. If you think your query might match several commands in the list, uses the ◀ Previous and ▶ Next button right of the  Search field to navigate between matching commands.

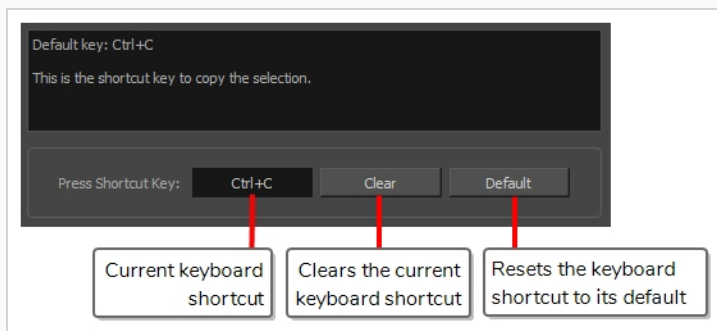
Customizing Keyboard Shortcuts

You can create your own keyboard shortcut for a tool or command, by assigning it to a certain key or combination of keys.

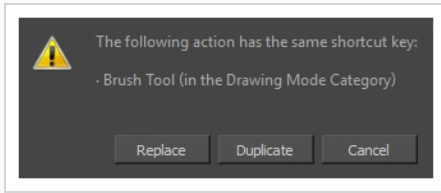
How to customize a keyboard shortcut

1. Do one of the following to open the Keyboard Shortcuts dialog:
 - **Windows or GNU/Linux:** In the top menu, select **Edit > Keyboard Shortcuts**.
 - **macOS:** In the top menu, select **Harmony [Edition] > Keyboard Shortcuts**.
2. In the list of commands and shortcuts to the left, locate and select the command for which you want to assign a keyboard shortcut—see [Searching for Keyboard Shortcuts](#).

The description of the selected command, as well as its currently assigned shortcut, appear in the right pane.



3. Do one of the following:
 - If you want to assign a custom shortcut to the selected command, click inside the box just right of **Press Shortcut Key:**.
 - If you want the selected command to have no keyboard shortcut, click on **Clear**.
 - If you want the selected command to be assigned to its default keyboard shortcut, click on **Default**.
4. If you are assigning a custom keyboard shortcut to the selected command, using your keyboard, type in the keyboard shortcut you want to use in the **Press Shortcut Key:** field.
5. If the keyboard shortcut you typed in is already in use by another command, a dialog box will prompt you to decide what to do.



If this occurs, choose one the following options depending on what suits your case better:

- **Replace:** This will unassign the keyboard shortcut from the commands listed in the dialog box, and assign it to the selected command.
- **Duplicate:** Assigns the keyboard shortcut to the selected command, and lets other commands use the same keyboard shortcut.



IMPORTANT

Having several commands share the same keyboard shortcut could cause undesired behaviour.

- **Cancel:** Allows you to attempt assigning a different keyboard shortcut to the selcted command.

Resetting Keyboard Shortcuts

You can reset the configuration of your keyboard shortcuts to the default values for the selected keyboard shortcut set.



IMPORTANT

This will replace your current keyboard shortcut configuration and discard any custom keyboard shortcut you created.

How to reset your keyboard shortcuts configuration

1. Do one of the following to open the Keyboard Shortcuts dialog:
 - **Windows or GNU/Linux:** In the top menu, select **Edit > Keyboard Shortcuts**.
 - **macOS:** In the top menu, select **Harmony [Edition] > Keyboard Shortcuts**.
2. In the **Keyboard Shortcuts:** drop-down, make sure the keyboard shortcut set that you want to restore to its default configuration is selected.
3. In the bottom-left corner of the Keyboard Shortcuts dialog, click on **Restore All Defaults**.
A confirmation prompt appears.
4. If you are sure you want to restore the default keyboard shortcut configuration for the selected keyboard shortcut set, click on **Yes**.

All the commands in the list are now set to their default keyboard shortcut.

Default Keyboard Shortcuts

The following section lists all of the default keyboard shortcuts for Harmony.

To make it easier to search for specific keyboard shortcuts, the shortcuts have been divided and grouped into sections.

General Keyboard Shortcuts

Command	Description	Windows/Linux	macOS	My Shortcut
Advanced Save	This is the shortcut to open the Advanced Save dialog box. This dialog box is used to save specific parts of a scene (scene data, palette lists, palettes and drawings).	Ctrl + Shift + S	Shift + ⌘ + S	
Cancel Preview	This is the shortcut key to cancel the automatic preview.	Shift + Esc	Shift + Esc	
Copy	This is the shortcut key to copy the selection.	Ctrl + C	⌘ + C	
Cut	This is the shortcut key to cut the selection.	Ctrl + X	⌘ + X	
Delete	This is the shortcut key to delete the selection.	Del	Backspace	
Deselect All	This is the shortcut key to deselect all selected objects.	Esc	Esc	
Export Animated GIF	Use this shortcut to open the Export Animated GIF window.			
Free Pan and Zoom	This is the shortcut key to pan and zoom the current view.	Space	Space	
Go to Next Column	Go to Next Column	J	J	
Go to Next Drawing	Go to Next Drawing	G	G	
Go to Previous Column	Go to Previous Column	H	H	

Command	Description	Windows/Linux	macOS	My Shortcut
Go to Previous Drawing	Go to Previous Drawing	F	F	
Help	This is the shortcut to the Online Help			
Invert Selection	This is the shortcut key to invert the selection in the current view.	Ctrl + Shift + I	Shift + ⌘ + I	
New	This is the shortcut to create a new scene.	Ctrl + N	⌘ + N	
Open	This is the shortcut to open a scene or open drawings in paint mode.	Ctrl + O	⌘ + O	
Open Elements	This is the shortcut to open elements in paint mode.	Ctrl + E	⌘ + E	
Paste	This is the shortcut key to paste the clipboard contents to the scene.	Ctrl + V	⌘ + V	
Preferences	Launches the preferences dialog.	Ctrl + U	⌘ + U	
Quick Close-up	This toggles between a global view and a close-up view.	Shift + Z	Shift + Z	
Recentre	This is the shortcut key to recentre the view on the mouse pointer in the current view.	N	N	
Redo	This is the shortcut key to redo the an operation that was undone.	Ctrl + Shift + Z	Ctrl + Shift + Z	
Remove Art Outside Selection	This is the shortcut key to delete the selection.	Shift + Del or Shift + Backspace	Shift + Del or Shift + Backspace	

Command	Description	Windows/Linux	macOS	My Shortcut
Reset Pan	This is the shortcut key to recentre the current view.	Shift + N	Shift + N	
Reset Rotation	This is the shortcut to reset the rotation of the current view.	Shift + X	Shift + X	
Reset View	This is the shortcut key to reset the pan, the zoom and the rotation in the current view.	Shift + M	Shift + M	
Reset Zoom	This is the shortcut key to reset the zoom level of the current view.			
Rotate View CCW	This is the shortcut key to rotate the view counter clock-wise.			
Rotate View CW	This is the shortcut key to rotate the view clock-wise.			
Save	This is the shortcut to save everything in a scene (scene data, palette lists, palettes and drawings).	Ctrl + S	⌘ + S	
Select All	This is the shortcut key to select everything in the current view.	Ctrl + A	⌘ + A	
Shortcuts	Launches the shortcuts dialog.			
Show Colour Model	The shortcut key that opens/closes the Colour Model.	Shift+K	Shift+K	
Show Whats This	The shortcut key to Help.	F1	⌘ + /	
Toggle Auto- Get-Rights-to- Modify-	This is the shortcut key to toggle the automatic locking of palette lists.			

Command	Description	Windows/Linux	macOS	My Shortcut
Palette-Lists				
Toggle Auto-Get-Rights-to-Modify-Palettes	This is the shortcut key to toggle the automatic locking of palettes.			
Undo	This is the shortcut key to undo the previous operation.	Ctrl + Z	⌘ + Z	
Zoom In	This is the shortcut key to zoom-in the current view.	2	2	
Zoom Out	This is the shortcut key to zoom-out the current view.	1	1	

Colour Management Keyboard Shortcuts

Command	Description	Windows/Linux	macOS	My Shortcut
Get Rights to Modify All Palettes	Shortcut key for the Get Rights to Modify All Palettes command.	Alt + L	Alt + L	
Palette Go to Next Colour	Shortcut to change the current colour to the next colour.			
Palette Go to Previous Colour	Shortcut to change the current colour to the previous colour.			
Protect Colour Value	Shortcut to toggle on/off Protect Colour on selected colour pots.			
Recolour Drawing...	Shortcut to replace current colour in drawings			

Drawing Mode Keyboard Shortcuts

Command	Description	Windows/Linux	macOS	My Shortcut
Activate Magnifier	Activate Magnifier temporarily or toggle it permanently if pressed with ALT.			
Apply Tool to All Frames	Turn on and off the Apply to All Frames mode. When Apply to All Frames is on, some operations will apply to all frames on the selected drawing layers.	Alt + A	Alt + A	
Apply Tool to Line and Colour Art	Turn on and off the Apply to Line and Colour Art mode. When Apply to Line and Colour Art is on, some operations will apply to all art layers of the drawing.	Shift+Q	Shift+Q	
Apply to Onion Skin Range	Turn on and off the Apply to Onion Skin Range mode. When Apply to Onion Skin Range is on, some operations will apply to all the drawings visible in the onion skin.			
Apply Tool to Synced Drawing Layers	Turn on and off the Apply to Synced Drawing Layers mode. When Apply to Synced Drawing Layers is on, some operations will apply to the current drawing layer and all layers synced with that layer in the Camera View.			
Apply Tool to Visible Drawing Layers	Turn on and off the Apply to Visible Drawing Layers mode. When Apply to Visible Drawing Layers is on, some operations will apply to all visible drawing layers in the			

Command	Description	Windows/Linux	macOS	My Shortcut
	Camera View.			
Auto-Create Colour Art from Brush	Shortcut to toggle the Create Colour Art on Brush switch	Shift+F2	Shift+F2	
Automatically Fill Inside Regions	Automatically fill drawing shapes.	Ctrl + Shift + R	⌘ + Shift + R	
Auto-Matte	Generate Auto-Matte.			
Bring Forward	Bring the selected drawing element one step forward.	Ctrl + PgUp	⌘ + PgUp	
Bring To Front	Bring the selected drawing element to the front.	Ctrl + Shift + PgUp	⌘ + Shift + PgUp	
Brush Tool	Activate the Brush Tool in Brush Mode.	Alt + B	Alt + B	
Brush Tool (General)	Activate the Brush Tool.			
Centerline Editor Tool	Activate the Centerline Editor Tool.	Alt + W	Alt + W	
Change Bitmap Drawing Resolution	Change the resolution for the selected bitmap drawing(s)			
Change Vector Drawing Brush Resolution	Change the brush resolution for the selected vector drawing(s)			
Close Gap Interactive Tool	Pops up a dialog to adjust the size of gaps to be closed all at once.	Shift+F10		

Command	Description	Windows/Linux	macOS	My Shortcut
Close Gap Tool	Activate the Close Gap Tool.	Alt + C	Alt + C	
Contour Editor Tool	Activate the Contour Editor Tool.	Alt + Q	Alt + Q	
Convert Brush Strokes to Pencil Lines	Convert Brush to Pencil.	^	^	
Convert Pencil Lines to Brush Strokes	Convert Pencil Lines to Brush.	&	&	
Convert Strokes to Pencil Lines	Convert selected (invisible) strokes to pencil lines.	Shift + F12	Shift + F12	
Convert to Bitmap Drawing	Render the selected vector drawing(s) to generate a corresponding bitmap drawing(s)			
Convert to Vector Drawing	Vectorize the selected bitmap drawing(s) to generate a corresponding vector drawing(s)			
Create Colour Art from Line Art	Line Art To Colour Art.	*	*	
Crop Brush Textures	Crop and optimize the brush textures.			
Cutter Tool	Activate the Cutter Tool.	Alt + T	Alt + T	
Cycle Through Flatten Drawing Modes	This shortcut cycles through the different drawing modes: Normal, Flatten Latest and Auto Flatten			

Command	Description	Windows/Linux	macOS	My Shortcut
Decrement Brush Size	Decrement Brush Size.			
Draw Behind				
Drawing Pivot Tool	This is the shortcut for the pivot tool.	Shift + P	Shift + P	
Dropper Tool	Activate the Dropper Tool.	Alt + D	Alt + D	
Edit Texture/Gradient Tool	Activate the Edit Texture/Gradient Tool	Shift + F3	Shift + F3	
Ellipse Tool	Activate the Ellipse Tool.	Alt + =	Alt + =	
Eraser Tool	Activate the Eraser Tool.	Alt + E	Alt + E	
Flatten	Flatten.	Alt + Shift + F	Alt + Shift + F	
Flatten and Remove Extra Strokes	Shortcut to flatten and remove the extra strokes	Ctrl + Shift + F	⌘ + Shift + F	
Flatten Latest	Shortcut to toggle the draw top layer switch			
Hand Tool	Activate the Hand Tool.			
Increment Brush Size	Increment Brush Size.			
Ink Tool	Activate the Ink Tool.			
Join Pencil Lines	Join Pencil Lines.	Alt + Shift + J	Alt + Shift + J	
Light Table	The shortcut key that activates the Auto Light Table	Shift + L	Shift + L	

Command	Description	Windows/Linux	macOS	My Shortcut
	command.			
Line Tool	Activate the Line Tool.	Alt + \	Alt + \	
Merge Pencil Lines	Shortcut to merge selected pencil lines into a single pencil line.			
Onion Skin: 1 Next	The shortcut key that activates the Next Drawing command for the onion skin.	Ctrl + 1	⌘ + 1	
Onion Skin: 1 Previous	The shortcut key that activates the Previous Drawing command for the onion skin.	!	!	
Onion Skin: 2 Next	The shortcut key that activates the Next Two Drawings command for the onion skin.	Ctrl + 2	⌘ + 2	
Onion Skin: 2 Previous	The shortcut key that activates the Previous Two Drawings command for the onion skin.	@	@	
Onion Skin: 3 Next	The shortcut key that activates the Next Three Drawings command for the onion skin.	Ctrl + 3	⌘ + 3	
Onion Skin: 3 Previous	The shortcut key that activates the Previous Three Drawings command for the onion skin.	#	#	
Onion Skin: Add 1 Next	The shortcut key that activates the Add One Next Drawing command for the			

Command	Description	Windows/Linux	macOS	My Shortcut
	onion skin.			
Onion Skin: Add 1 Previous	The shortcut key that activates the Add One Previous Drawing command for the onion skin.			
Onion Skin: No Next	The shortcut key that activates the No Next Drawings command for the onion skin.	Ctrl + `	⌘ + `	
Onion Skin: No Previous	The shortcut key that activates the No Previous Drawings command for the onion skin.	~	~	
Onion Skin: Reduce 1 Next	The shortcut key that activates the Reduce One Next Drawing command for the onion skin.			
Onion Skin: Reduce 1 Previous	The shortcut key that activates the Reduce One Previous Drawing command for the onion skin.			
Optimize	Combine the selected drawing's strokes.	Ctrl + Alt + Shift + C	⌘ + Alt + Shift + C	
Paint and Remove Texture	Shortcut to toggle the Paint Over Texture switch	Shift + F6	Shift + F6	
Paint Tool	Activate the Paint Tool.	Alt + I	Alt + I	
Paint Tool (General)	Activate the Paint Tool without changing its mode.			
Paint Unpainted Tool	Activate the Paint Tool in Paint Unpainted Mode.	Alt+Y	Alt+Y	

Command	Description	Windows/Linux	macOS	My Shortcut
Pencil Editor Tool	Activate Pencil Editor Tool temporarily or permanently if pressed with ALT.	8	8	
Pencil Tool	Activate the Pencil Tool.	Alt + /	Alt + /	
Permanent Selection	Selects drawings in the specified area for all frames in the scene.	Ctrl + Shift + P	⌘ + Shift + P	
Perspective Tool	This is the shortcut for the drawing perspective tool.	Alt + 0	Alt + 0	
Polyline Tool	Activate the Polyline Tool.	Alt + _	Alt + _	
Preview Line and Colour Arts	Shortcut key to toggle Preview Mode on and off in the Drawing View. In Preview Mode, all layers of the drawing are visible; only the active layer (Line Art or Colour Art) is visible when Preview Mode is off.	P	P	
Rectangle Tool	Activate the Rectangle Tool.	Alt + 7	Alt + 7	
Reduce Drawing Texture Resolution	Reduce drawing texture resolution.			
Remove Dirt	Shortcut to call the remove dirt function	Shift + D	Shift + D	
Remove Hair	Pops a dialog to adjust the length of hair to be removed.			
Remove Art Inside Selection	Removes art inside selection on current drawing			
Remove Art Inside	Removes art inside selection			

Command	Description	Windows/Linux	macOS	My Shortcut
Selection on All Drawings	on all drawings			
Removes Art Outside Selection	Removes art outside selection on current drawing			
Removes Art Outside Selection on All Drawings	Removes art outside selection on all drawings			
Repaint Brush Tool	Activate the Brush Tool in Repaint Mode.	Alt + X	Alt + X	
Repaint Tool	Activate the Paint Tool in Repaint Mode.	Alt + R	Alt + R	
Resize Pencil Style Tool	This is the shortcut for the tool to resize pencil.	O	O	
Rotate 180	Rotate the drawing 180 degrees.			
Rotate 90 CCW	Rotate the drawing 90 degrees counterclockwise.	Ctrl + 7	⌘ + 7	
Rotate 90 CW	Rotate the drawing 90 degrees clockwise.	Ctrl + 9	⌘ + 9	
Rotate View Tool	Activate the Rotate View Tool.			
Select Strokes with Current Colour	This is the shortcut key to select all drawing objects in the active layer(s) of a drawing that are coloured with the current colour.	Ctrl + Shift + A	⌘ + Shift + A	
Select Tool	Activate the Select Tool.	Alt + S	Alt + S	

Command	Description	Windows/Linux	macOS	My Shortcut
Send Backward	Send the selected drawing element one step backward.	Ctrl + PgDown	⌘ + PgDown	
Send to Back	Send the selected drawing element to the back.	Ctrl + Shift + PgDown	⌘ + Shift + PgDown	
Show Grid	Show/hide the Drawing View grid by default.	Ctrl + '	⌘ + '	
Show Grid Outline Only	Toggle between the display of the drawing view grid in outline or full field chart mode.			
Show Strokes	Shortcut key to the Show Strokes command.	K	K	
Show/Hide Contour Editor Controls	Show/Hide Rotation and Scale Controls	Alt+F5	Alt+F5	
Show/Hide Onion Skin	Toggles on and off the onion skin.	Alt + O	Alt + O	
Smooth	Smooth.	Alt + Shift + S	Alt + Shift + S	
Smooth Editor Tool	Activate the Smooth Editor Tool.			
Snap and Align	Use drawing bounding boxes for snapping and alignment.	Ctrl + Alt + ,	⌘+Alt + ,	
Snap to Contour	Use drawing contours for snapping.	Ctrl + Alt + ;	⌘+Alt + ;	
Snap to Grid	Snap drawings to the grid.	Ctrl + Alt + '	⌘ + Alt + '	
Split Pencil Line	Split Pencil Line.	Alt+Shift+K	Alt+Shift+K	

Command	Description	Windows/Linux	macOS	My Shortcut
Stamp Tool	Activate the Stamp tool.			
Stroke Tool	Activate the Stroke Tool.	Alt + V	Alt + V	
Switch to Line Art/Colour Art	Shortcut key to toggle between Line Art and Colour Art in a drawing.	L	L	
Switch to Overlay/Underlay Layer	Shortcut key to toggle between overlay and underlay layer in a drawing.	colon (:)	colon (:)	
Text Tool	Activate the Text Tool.	Alt + 9	Alt + 9	
Toggle Backlight	Shortcut key to turn the Backlight on and off in the Drawing View.	Alt + Shift + B	Alt + Shift + B	
Toggle Line Building Mode	Turn on and off the Pencil Tool Line Building Mode. This mode allows to append new pencil strokes to existing one when drawing with the Pencil Tool and Line Tool.			
Toggle Protect Colours	Turn on and off the Respect Sticky Colours option. When Respect Sticky Colours is on, you cannot change the colour of objects painted with sticky colours.	Shift + S	Shift + S	
Toggle stabilizer on/off	Toggle the pen stabilizer on and off			
Unpaint Tool	Activate the Paint Tool in Unpaint Mode.	Alt + U	Alt + U	
Zoom Tool	Activate Zoom Tool temporarily or permanently if	Alt + Z	Alt + Z	

Command	Description	Windows/Linux	macOS	My Shortcut
	pressed with ALT.			

Tool Presets Keyboard Shortcuts

Command	Description	Windows/Linux	macOS	My Shortcut
Tool Preset Shortcut #01	Tool Preset Shortcut 1.			
Tool Preset Shortcut #02	Tool Preset Shortcut 2.			
Tool Preset Shortcut #03	Tool Preset Shortcut 3.			
Tool Preset Shortcut #04	Tool Preset Shortcut 4.			
Tool Preset Shortcut #05	Tool Preset Shortcut 5.			
Tool Preset Shortcut #06	Tool Preset Shortcut 6.			
Tool Preset Shortcut #07	Tool Preset Shortcut 7.			
Tool Preset Shortcut #08	Tool Preset Shortcut 8.			
Tool Preset Shortcut #09	Tool Preset Shortcut 9.			
Tool Preset Shortcut #10	Tool Preset Shortcut 10.			

Shift and Trace Keyboard Shortcuts



NOTE

These keyboard shortcuts work with the Shift and Trace tool which can be used in the Camera view, not the Shift and Trace functionality of the desk in the Drawing view.

Command	Description	Windows/Linux	macOS	My Shortcut
Reset Shift and Trace of All Drawings	Reset the shift and trace position of all drawings on the current drawing layer.			
Reset Shift and Trace of Selected Drawings	Reset the shift and trace position of the selected drawings.			
Shift and Trace Tool	Use the Shift and Trace Tool to change the position of drawings in the Camera View when Shift and Trace is enabled. If you assign 'Alt + a shortcut key', you can temporarily override the current tool by using the shortcut key without the Alt modifier. Using Alt + key will activate the Shift and Trace tool.			
Shift and Trace Rotate	Use this shortcut to temporarily override from any tool to the Rotate mode of the Shift and Trace tool.			
Shift and Trace Scale	Use this shortcut to temporarily override from any tool to the Scale mode of the Shift and Trace tool.			

Gaming Keyboard Shortcuts

Command	Description	Windows/Linux	macOS	My Shortcut
Select Group #01	Select Group 01			
Select Group #02	Select Group 02			
Select Group #03	Select Group 03			
Select Group #04	Select Group 04			
Select Group #05	Select Group 05			
Select Group #06	Select Group 06			
Select Group #07	Select Group 07			
Select Group #08	Select Group 08			
Select Group #09	Select Group 09			
Select Group #10	Select Group 10			

Timesheet Keyboard Shortcuts

The following keyboard shortcuts are useful if you are working in a traditional Japanese animation pipeline. They use functionalities specific to the *Timesheet*, a special mode of the *Xsheet* view when using Harmony in Japanese.

Command	Description	Windows/Linux	macOS	My Shortcut
Add Camera Column	Adds a Camera column.			
Add Camera Fairing	Adds a wiggle line marker in the Camera column for Fairing.			
Add Camera Pan	Adds a straight line marker in the Camera column for Pan.			
Add Camera Point	Adds a marker in the Camera column for a customized camera position.			
Add Camera Point A	Adds a marker in the Camera column for the A camera position.			
Add Camera Point B	Adds a marker in the Camera column for the B camera position.			
Add Camera Point C	Adds a marker in the Camera column for the C camera position.			
Add Slide Marker A	Adds an A marker in the Camera column for layer slides or movements.			
Add Slide Marker E	Adds an A marker in the Camera column for layer slides or movements.			
Add Slide Marker I	Adds an A marker in the Camera column for layer slides or movements.			

Command	Description	Windows/Linux	macOS	My Shortcut
Add Slide Marker O	Adds an A marker in the Camera column for layer slides or movements.			
Add Slide Marker U	Adds an A marker in the Camera column for layer slides or movements.			
Add Sound Column	Adds a sound column named S.			
Clear Inbetween Markers	Clears the cell marker Inbetween, Reverse Inbetween or Reverse Reference.			
Export Timesheet to PDF	Exports the Timesheet information to a PDF file.			
Generate Cell Columns	Generates new columns from the selected columns, renames the drawing in ascending order and replaces inbetween markers with drawings.			
Mark as Breakdown	Marks the selected cell as a breakdown.			
Mark as Inbetween	Marks the selected cell as an inbetween.			
Mark as Key	Marks the selected cell as a key drawing.			
Mark as Reverse Inbetween	Marks the selected cell as a reverse inbetween.			

Mini Playback Keyboard Shortcuts

Command	Description	Windows/Linux	macOS	My Shortcut
Mini Playback	Starts the mini playback			
Mini Playback Dialog	Opens the mini playback dialog			